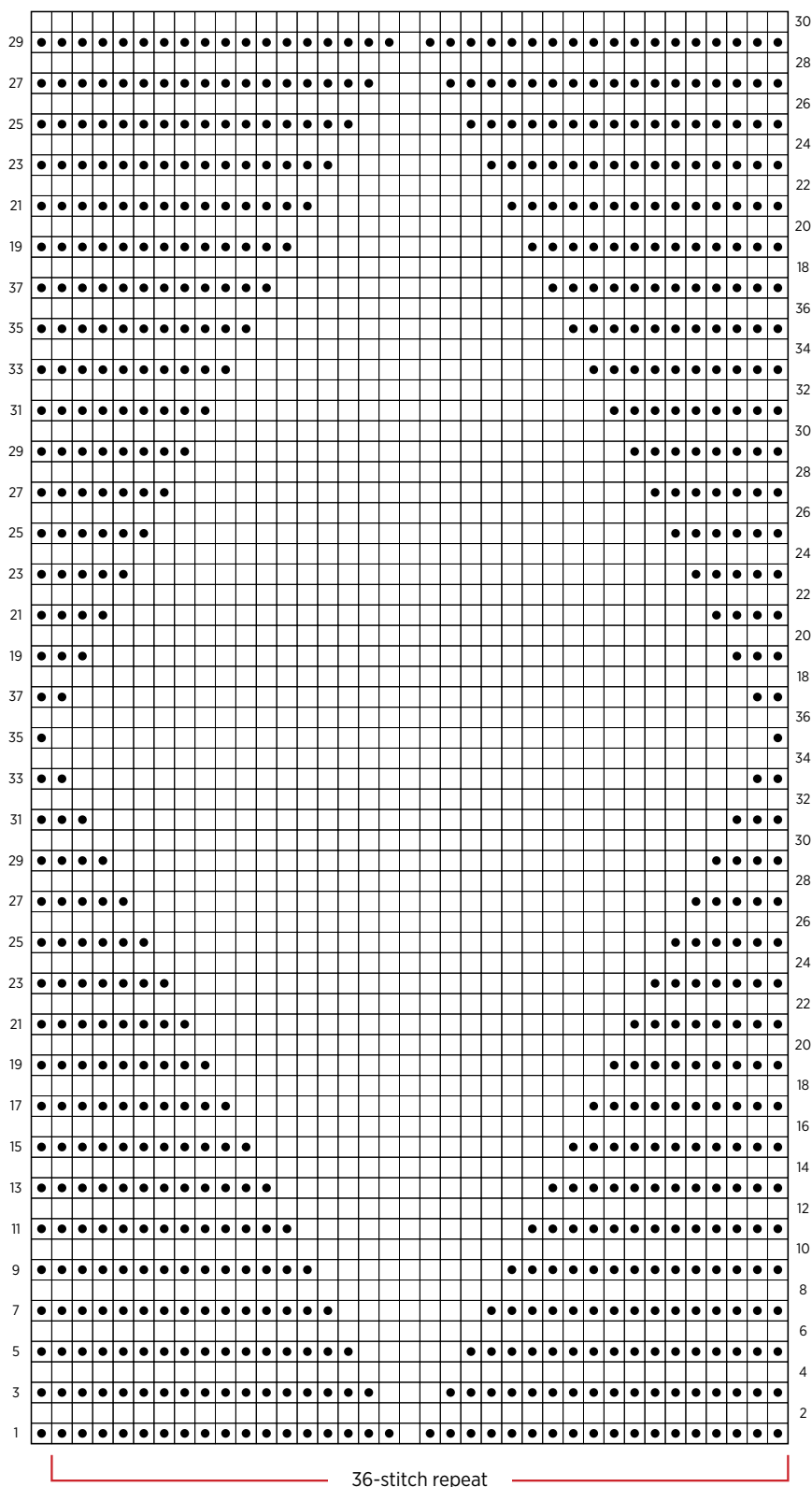


# Gemwork Blanket

## THROW PATTERN CHART



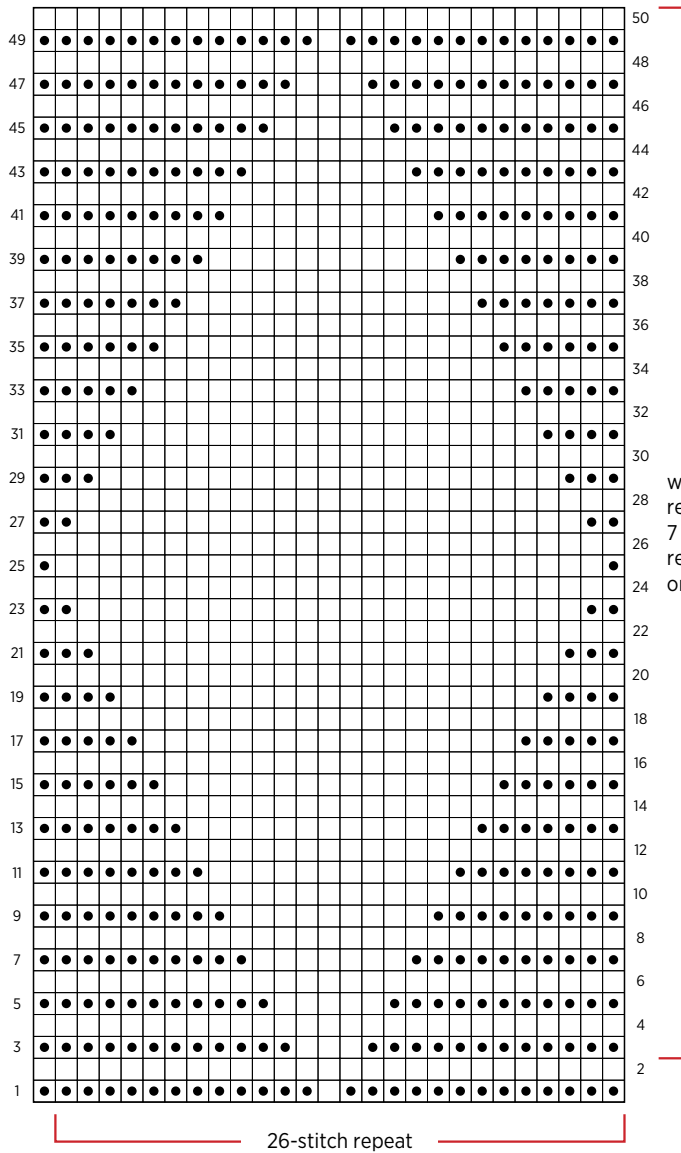
work Rows 1-70, then  
repeat Rows 3-70  
6 more times, then  
repeat Rows 3-69  
once more

### KEY

- knit on right side (k),  
purl on wrong side (p)
- knit on wrong side (k)

# Gemwork Blanket

## CRIB PATTERN CHART



work Rows 1-50, then  
repeat Rows 3-50  
7 more times, then  
repeat Rows 3-49  
once more

### KEY

- knit on right side (k),  
purl on wrong side (p)
- knit on wrong side (k)