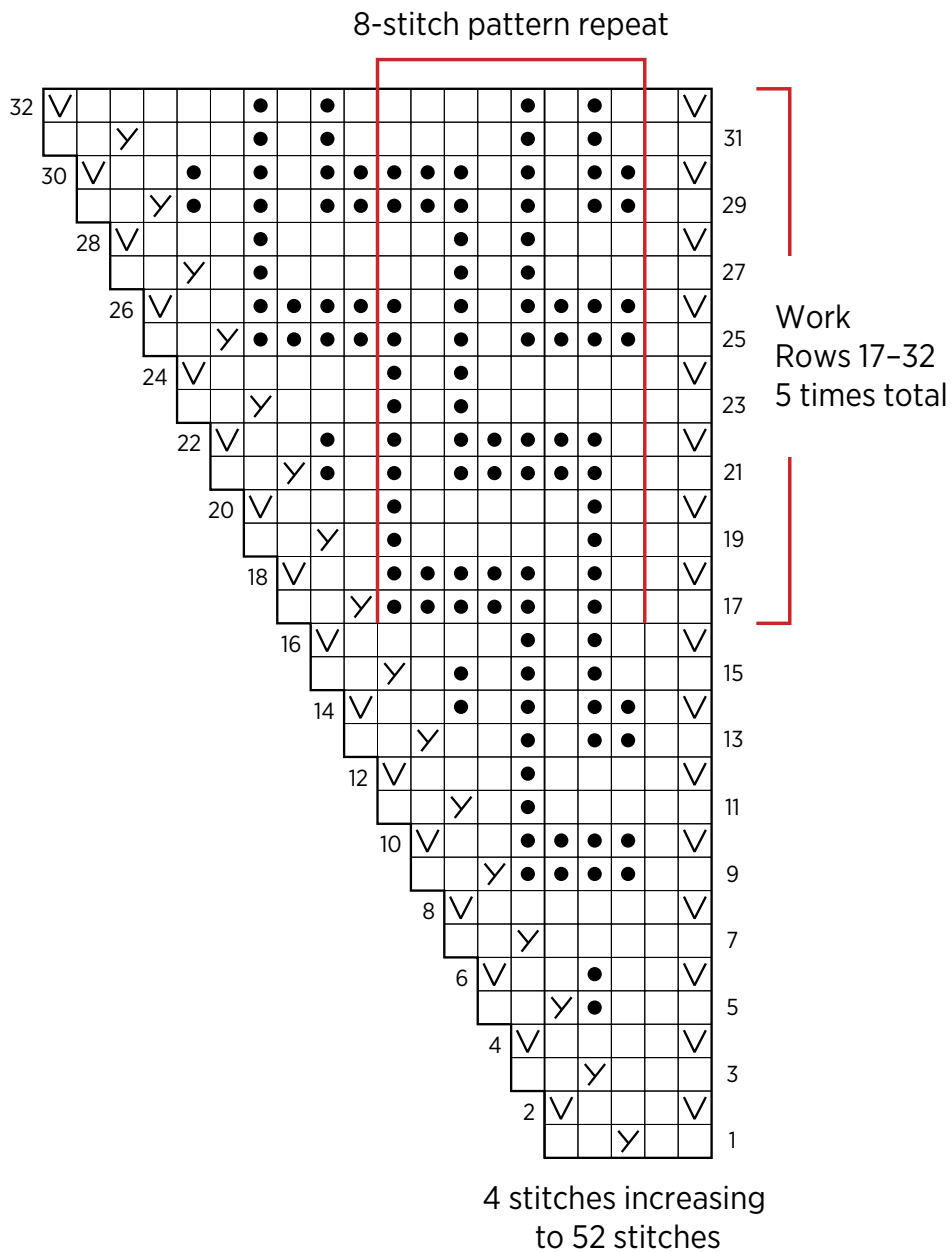


Hickory Shawl

PATTERN CHART 1/6

SECTION A: DIAGONAL CHEVRON ZIG ZAG INCREASE



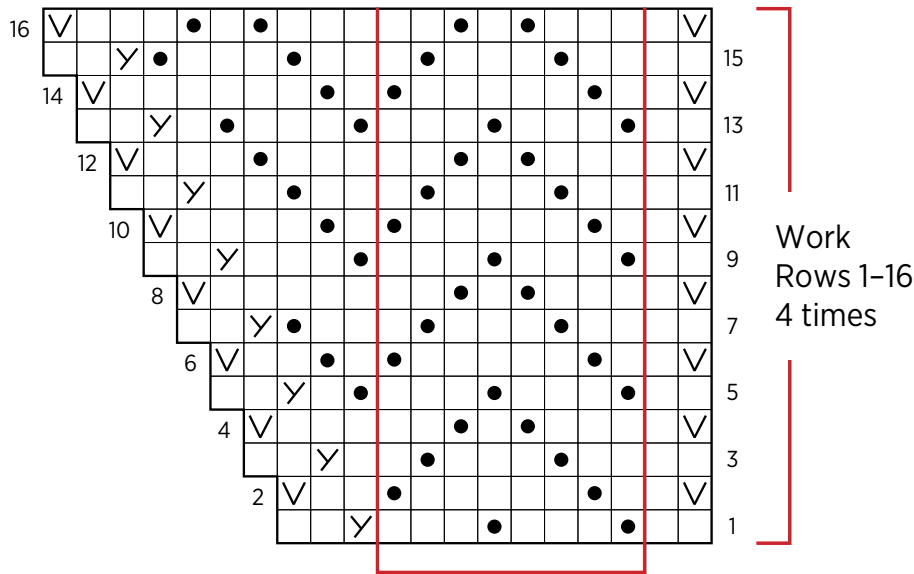
KEY

- knit on right side (k),
purl on wrong side (p)
- purl on right side (p),
knit on wrong side (k)
- slip 1 purlwise with yarn
in front on wrong side
- make 1 left (m1L)
- knit 2 together (k2tog)

Hickory Shawl

PATTERN CHART 2/6

SECTION B: CHEVRON SEED INCREASE

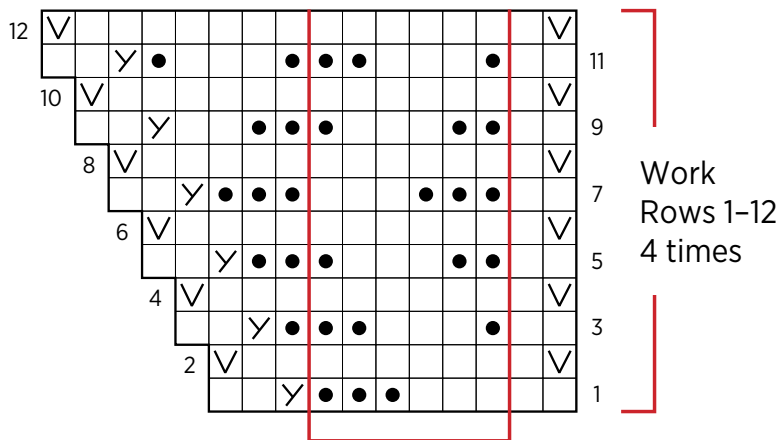


8-stitch pattern repeat;
52 stitches increasing to 84 stitches

KEY

- knit on right side (k),
purl on wrong side (p)
- purl on right side (p),
knit on wrong side (k)
- slip 1 purlwise with yarn
in front on wrong side
- make 1 left (m1L)
- knit 2 together (k2tog)

SECTION D: GARTER CHEVRON INCREASE

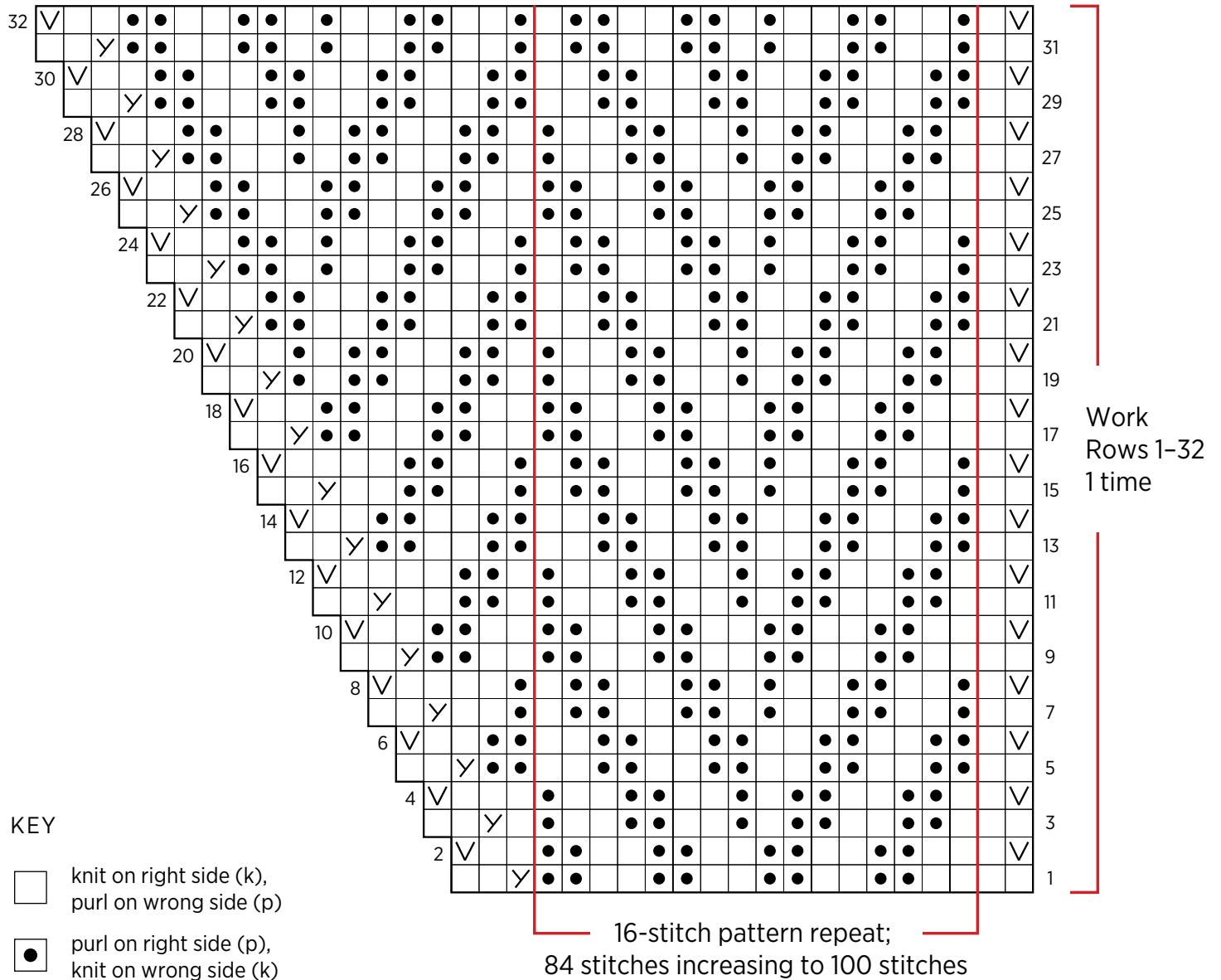


6-stitch pattern repeat;
100 stitches increasing to 124 stitches

Hickory Shawl

PATTERN CHART 3/6

SECTION C: CHEVRON RIB INCREASE



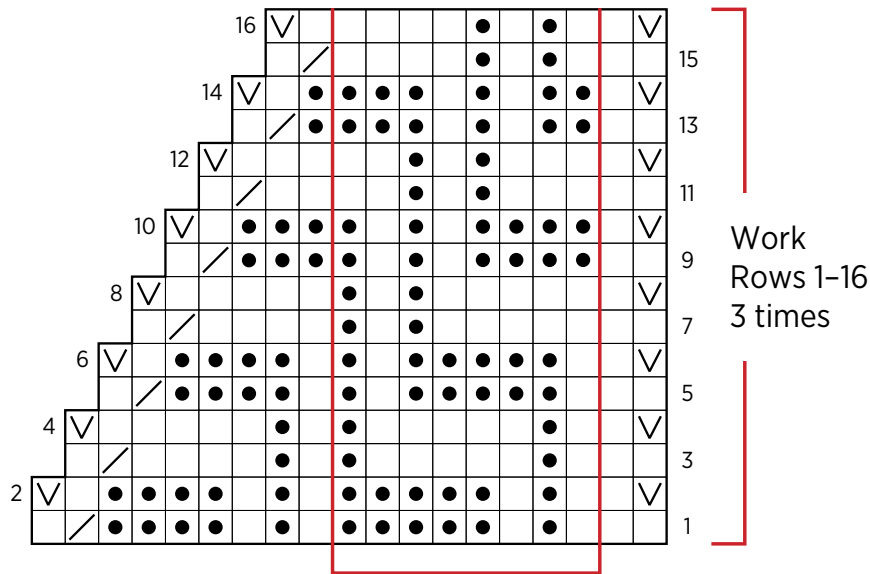
KEY

- knit on right side (k),
purl on wrong side (p)
- purl on right side (p),
knit on wrong side (k)
- slip 1 purlwise with yarn
in front on wrong side
- make 1 left (m1L)
- knit 2 together (k2tog)

Hickory Shawl

PATTERN CHART 4/6

SECTION E: DIAGONAL CHEVRON ZIG ZAG DECREASE

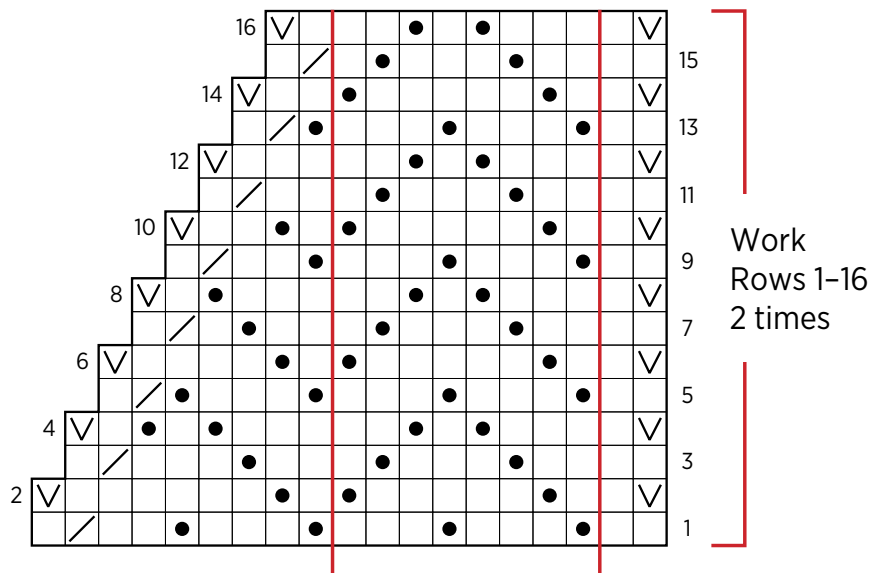


8-stitch pattern repeat;
124 stitches decreasing to 100 stitches

KEY

- knit on right side (k),
purl on wrong side (p)
- purl on right side (p),
knit on wrong side (k)
- slip 1 purlwise with yarn
in front on wrong side
- make 1 left (m1L)
- knit 2 together (k2tog)

SECTION F: CHEVRON SEED DECREASE

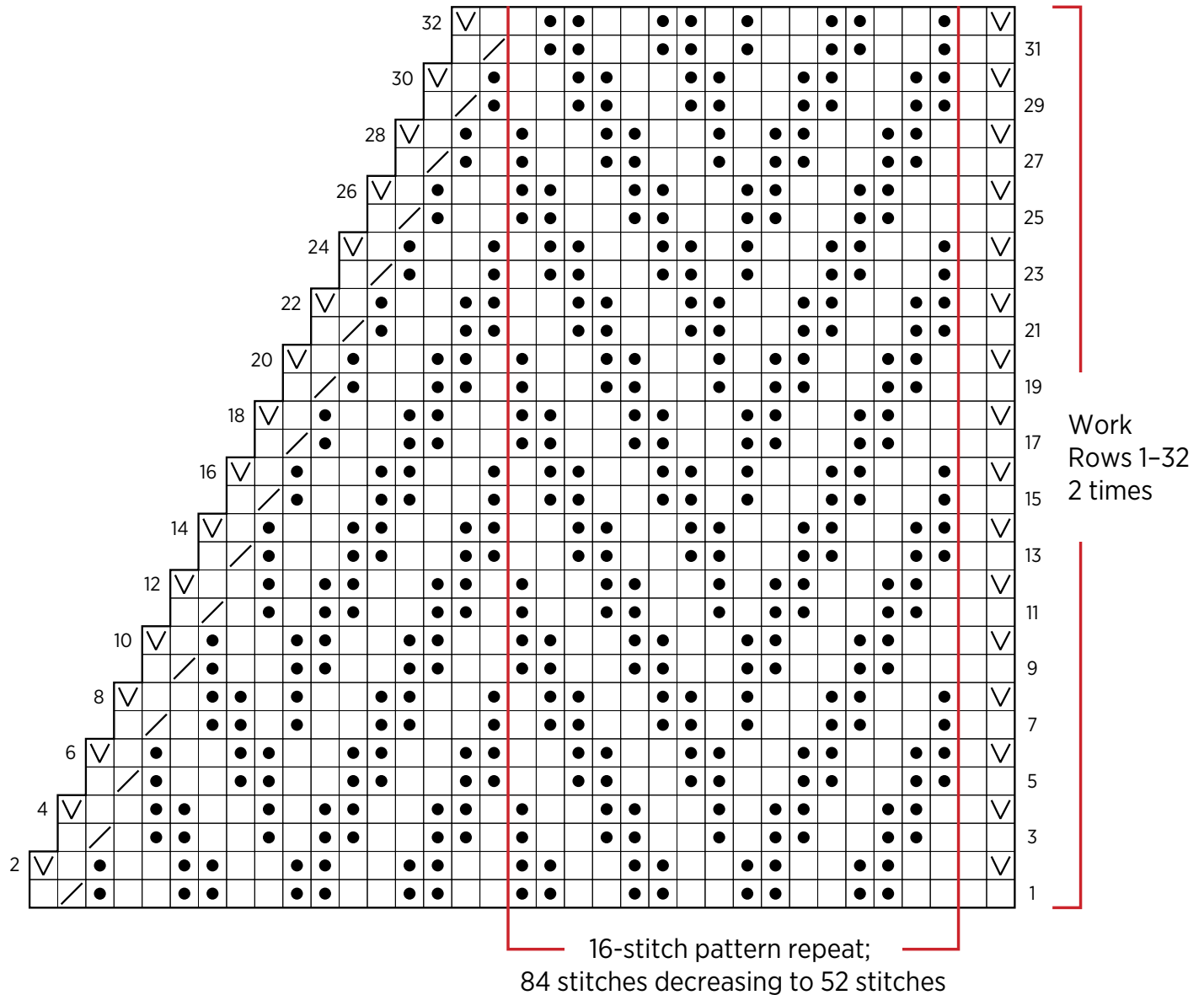


8-stitch pattern repeat;
100 stitches decreasing to 84 stitches

Hickory Shawl

PATTERN CHART 5/6

SECTION G: CHEVRON RIB DECREASE



KEY

- | | | | | | |
|-------------------------------------|---|--------------------------|---|--------------------------|-------------------------|
| <input type="checkbox"/> | knit on right side (k),
purl on wrong side (p) | <input type="checkbox"/> | slip 1 purlwise with yarn
in front on wrong side | <input type="checkbox"/> | knit 2 together (k2tog) |
| <input checked="" type="checkbox"/> | purl on right side (p),
knit on wrong side (k) | <input type="checkbox"/> | make 1 left (m1L) | | |

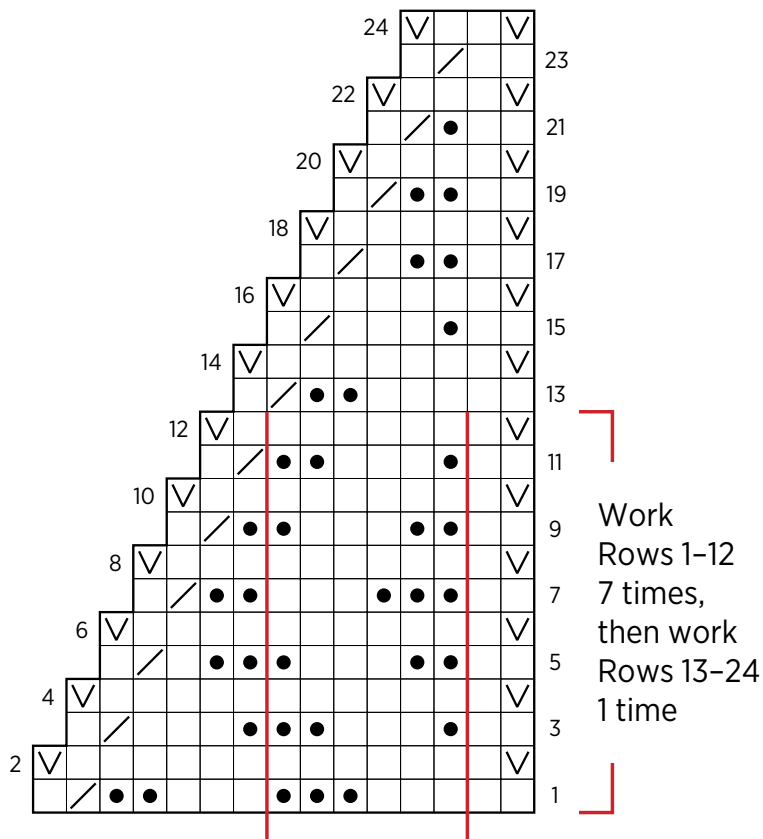
Hickory Shawl

PATTERN CHART 6/6

SECTION H: GARTER CHEVRON DECREASE

KEY

- knit on right side (k),
purl on wrong side (p)
- purl on right side (p),
knit on wrong side (k)
- slip 1 purlwise with yarn
in front on wrong side
- make 1 left (m1L)
- knit 2 together (k2tog)



Work
Rows 1-12
7 times,
then work
Rows 13-24
1 time

6-stitch pattern repeat;
52 stitches decreasing to 4 stitches