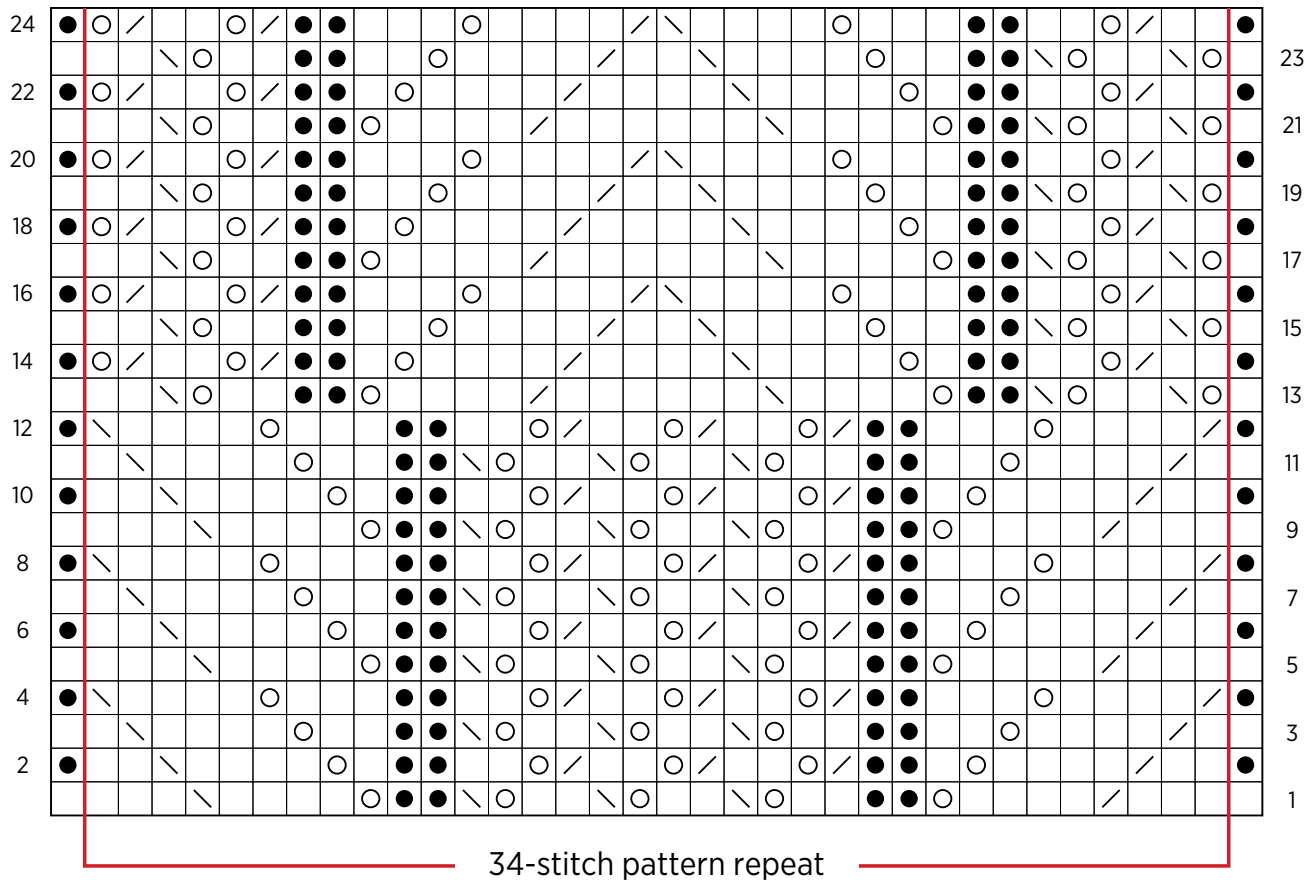







# Botanical Lace Wrap

## PATTERN CHART



### KEY

-  knit on right side (k),  
purl on wrong side (p)
-  purl on right side (p),  
knit on wrong side (k)
-  knit 2 together on right side (k2tog),  
purl 2 together on wrong side (p2tog)
-  slip slip knit on right side (ssk),  
purl 2 together through back loop  
on wrong side (p2tog tbl)
-  yarn over (yo)