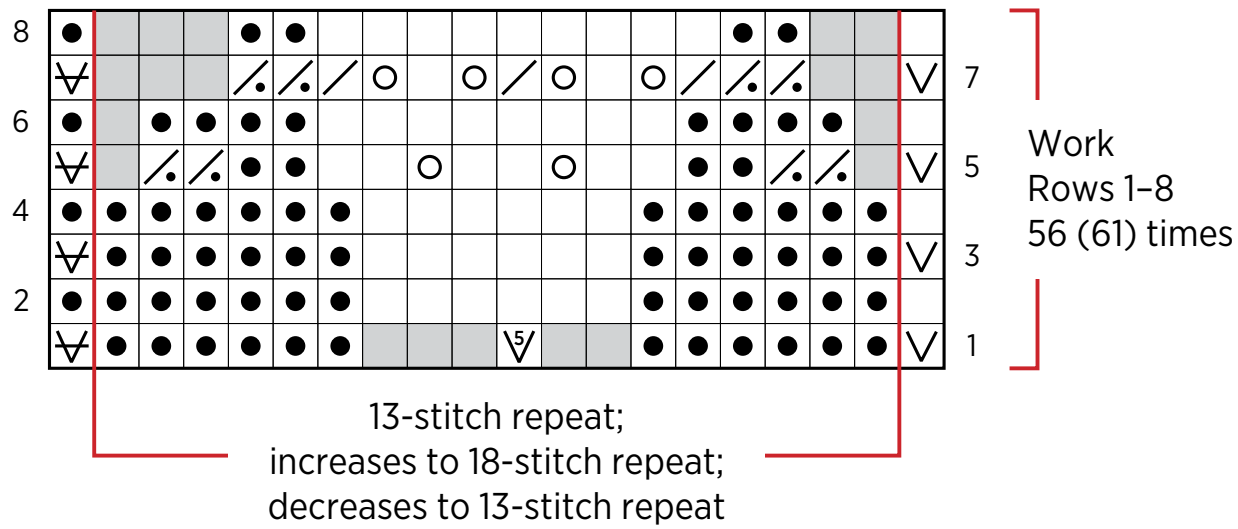


# Laurel Wrap

## PATTERN CHART



### KEY

- knit on right side (k), purl on wrong side (p)
- purl on right side (p), knit on wrong side (k)
- yarn over (yo)
- slip 1 purlwise with yarn in back on right side
- slip 1 purlwise with yarn in front on right side
- increase 5 (INC5)
- knit 2 together (k2tog)
- purl 2 together (p2tog)
- no stitch