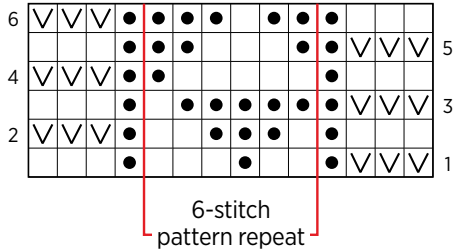


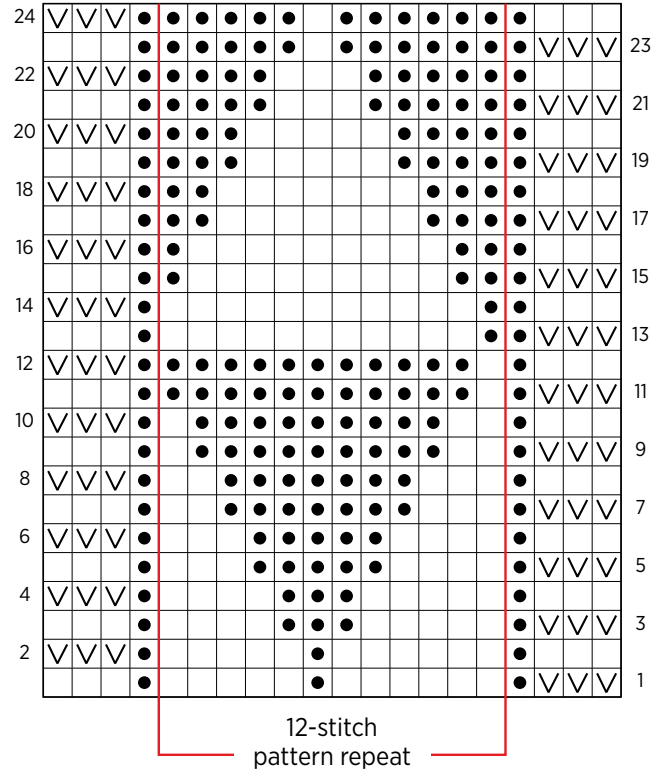
Porto Blanket

PATTERN CHART 1/3

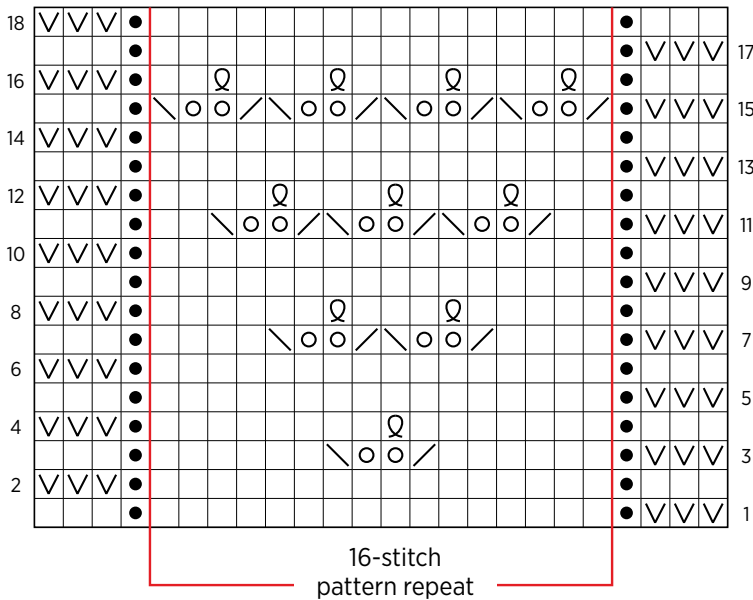
Sections A + L:
Knit Little Pyramid Chart



Sections B + K: Halved Diamond Chart



Section C: Eyelet Triangle Chart



Work Rows 1-18
3 times total

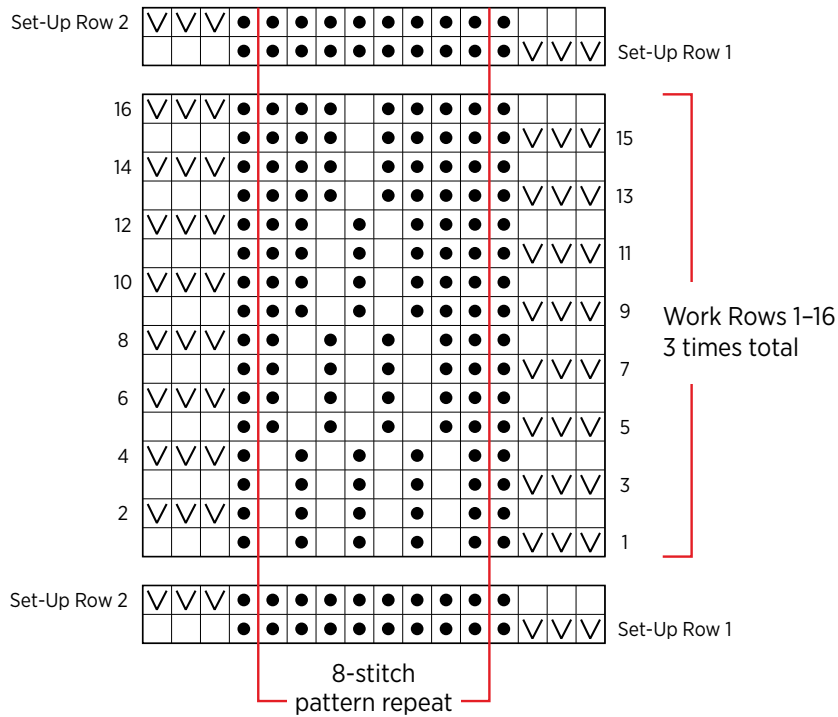
KEY

- knit on right side (k),
purl on wrong side (p)
- purl on right side (p),
knit on wrong side (k)
- yarn over (yo)
- knit 2 together (k2tog)
- slip, slip, knit (ssk)
- slip 1 with yarn in back on right side,
slip 1 with yarn in front on wrong side
- knit through back loop (k1 tbl) on right side,
purl through back loop (p1 tbl) on wrong side

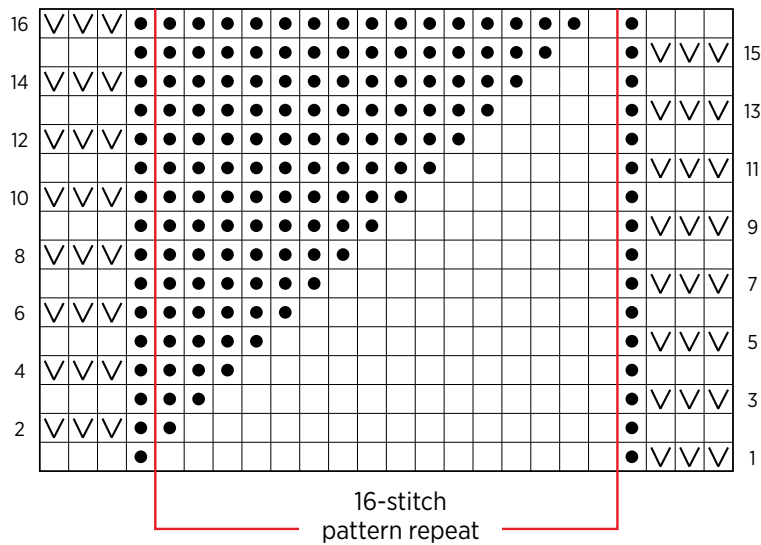
Porto Blanket

PATTERN CHART 2/3

Section D: Ribbed Pyramid Chart



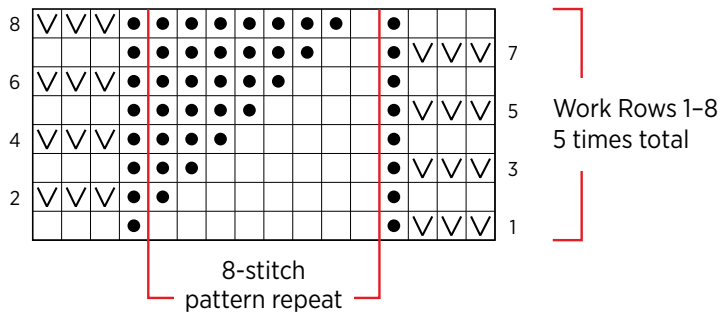
Sections E + G: Large Flag Chart



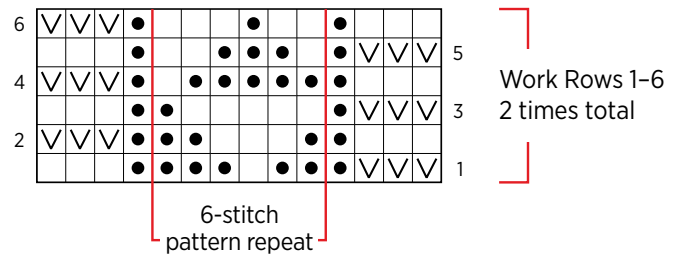
Porto Blanket

PATTERN CHART 2/3

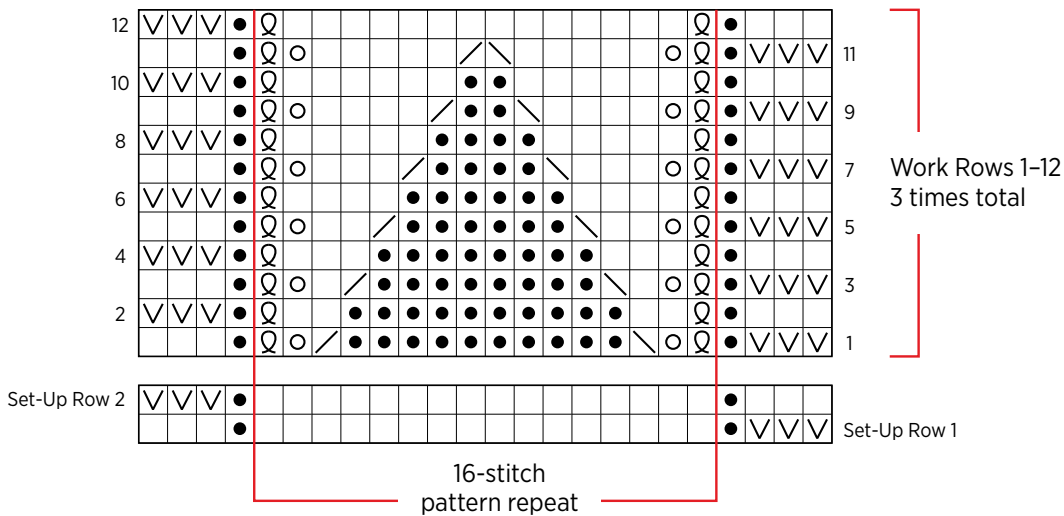
Section F: Small Flag Chart



Section I: Purl Little Pyramid Chart



Section H: Stacked Triangles Chart



Section J: Flying Geese Chart

