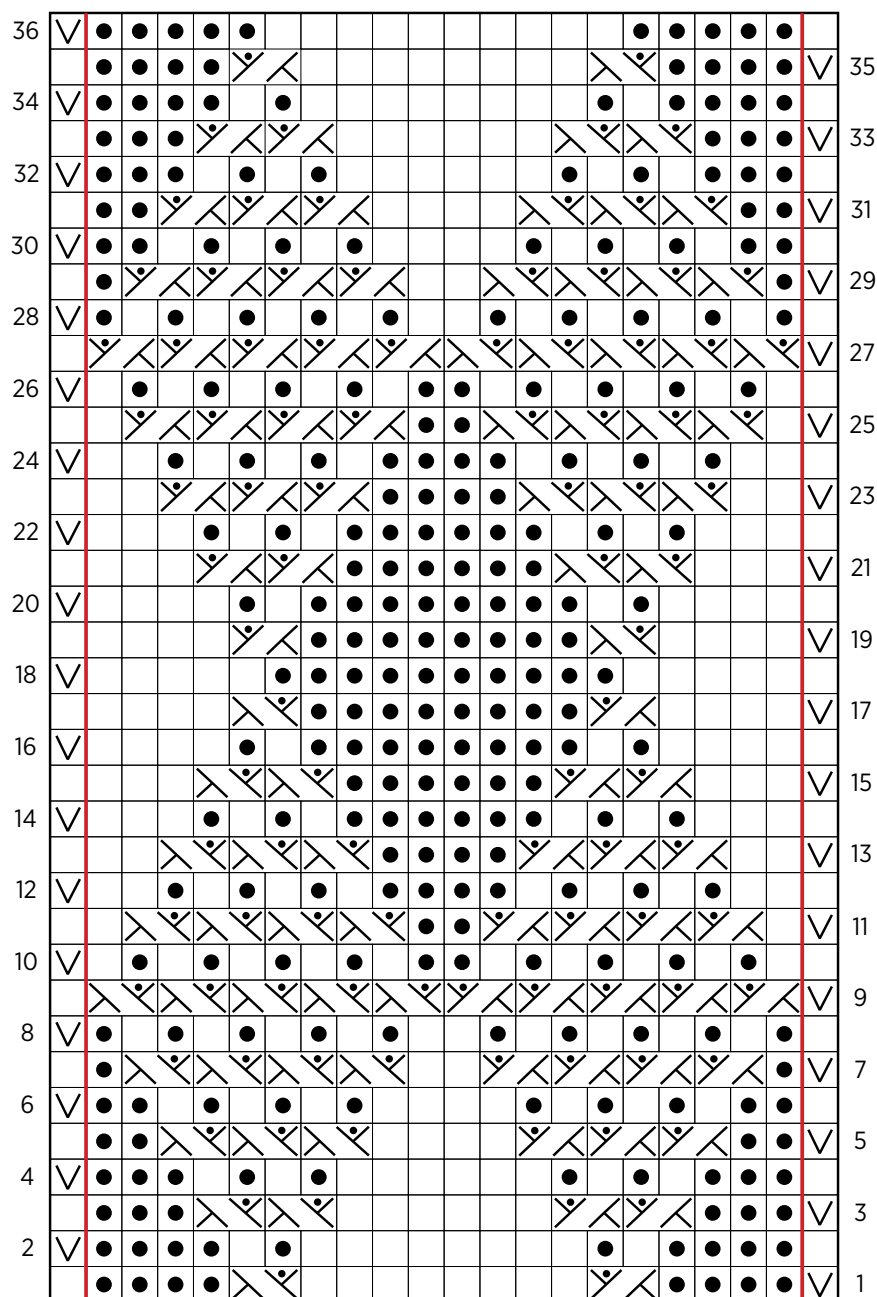


Seville Scarf

PATTERN CHART



Work
Rows 1-36
21 (22) times

KEY

□ knit on right side (k),
purl on wrong side (p)

● purl on right side (p),
knit on wrong side (k)

⧘ Left Purl Cross (LPC)

⧙ Right Purl Cross (RPC)

∇ slip 1 purlwise with yarn in back on right side,
slip 1 purlwise with yarn in front on wrong side