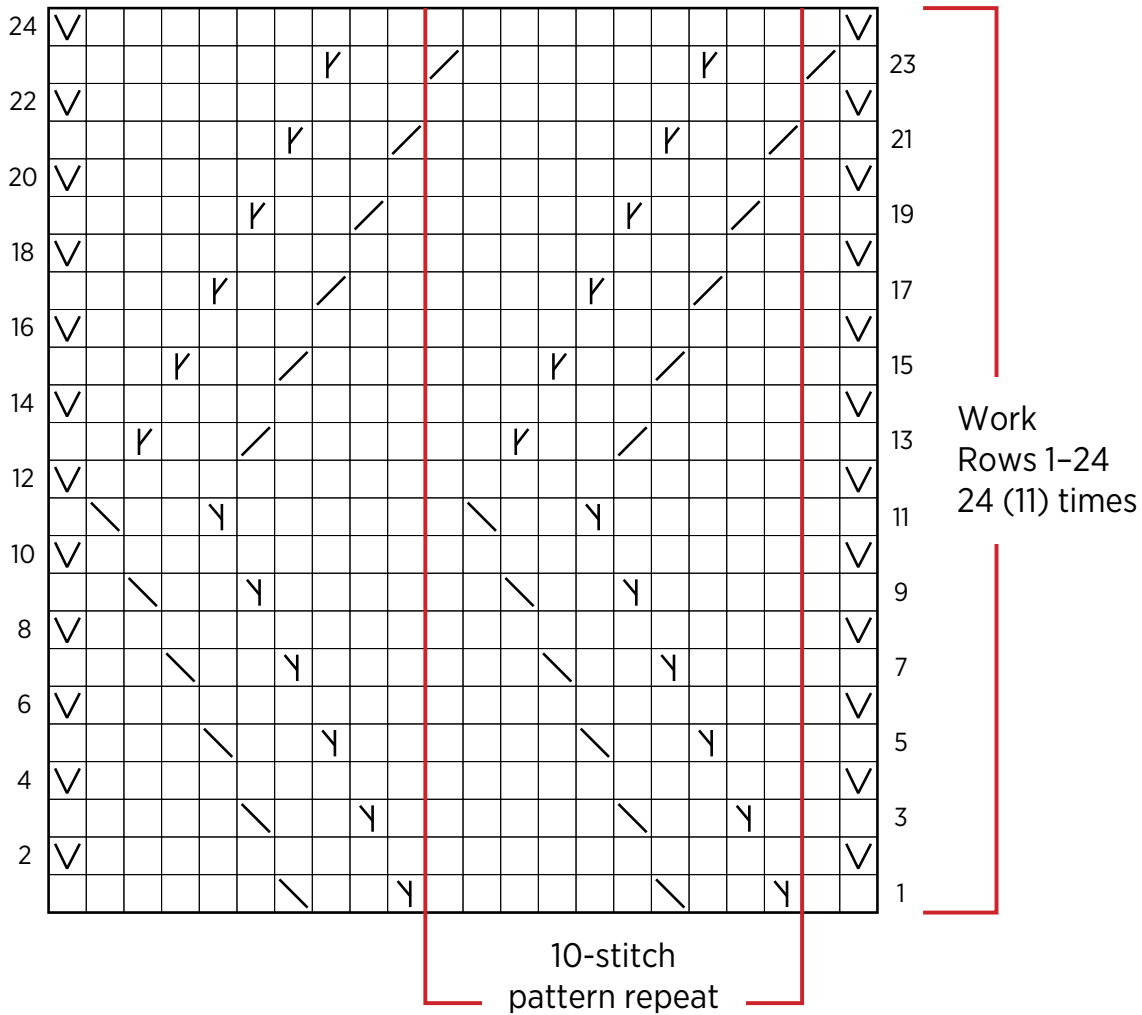


# Meadow Breeze Scarf + Shawl

## PATTERN CHART



### KEY

- ☐ knit on right side (k),  
purl on wrong side (p)
- ☒ slip 1 stitch purlwise with yarn  
in front on wrong side
- ☒ slip, slip, knit (ssk)
- ☒ knit 2 together (k2tog)
- ☒ left lifted increase (LLI)
- ☒ right lifted increase (RLI)