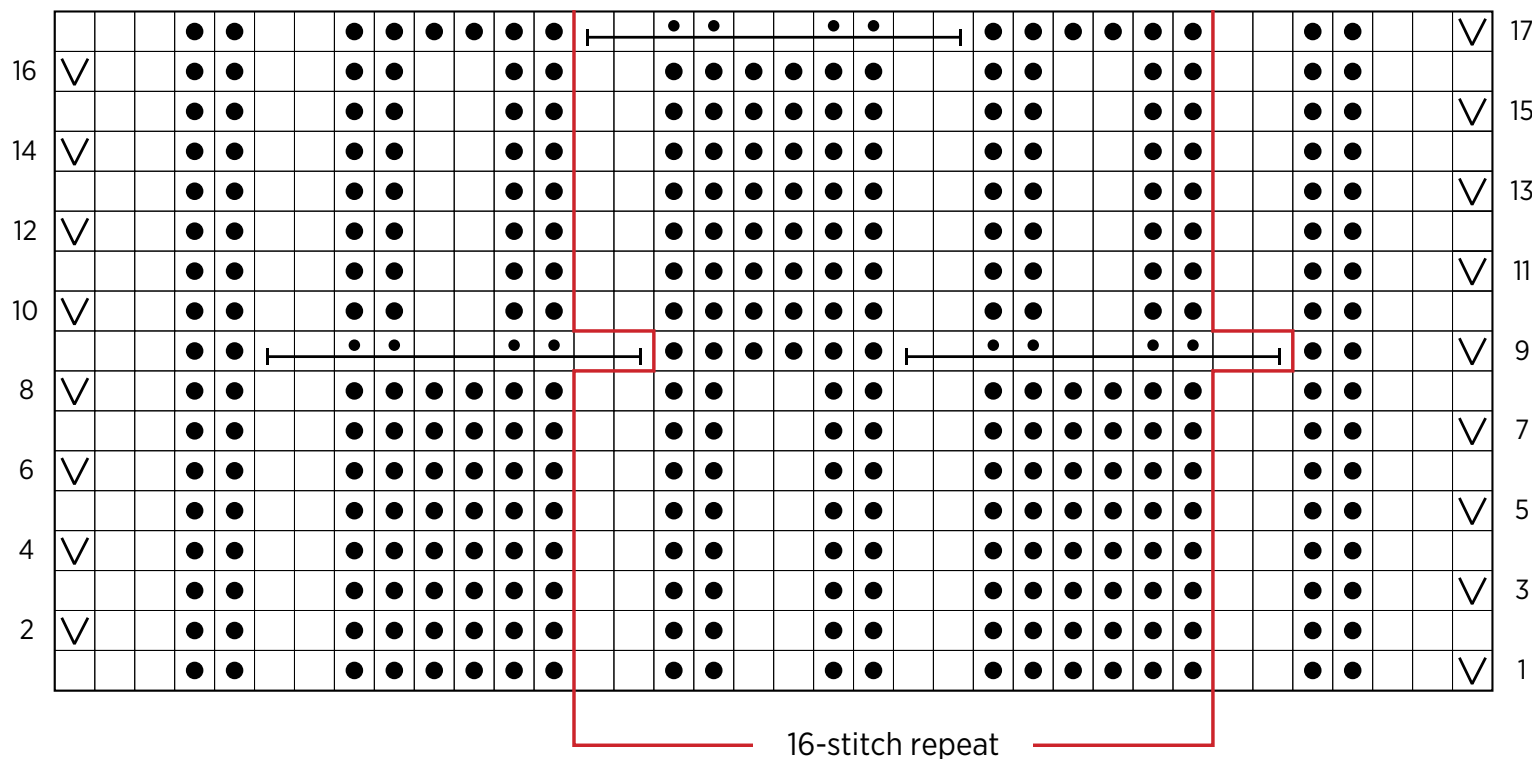


Smocking Stitch Wrap

PATTERN CHART



Work Rows 1-17, then repeat Rows 2-17 twenty-eight more times, then repeat Rows 2-16 one more time

KEY

□ knit on right side (k),
purl on wrong side (p)

∇ slip 1 with yarn in back on right side,
slip 1 with yarn in front on wrong side

● purl on right side (p),
knit on wrong side (k)

—•••— Smocking Stitch