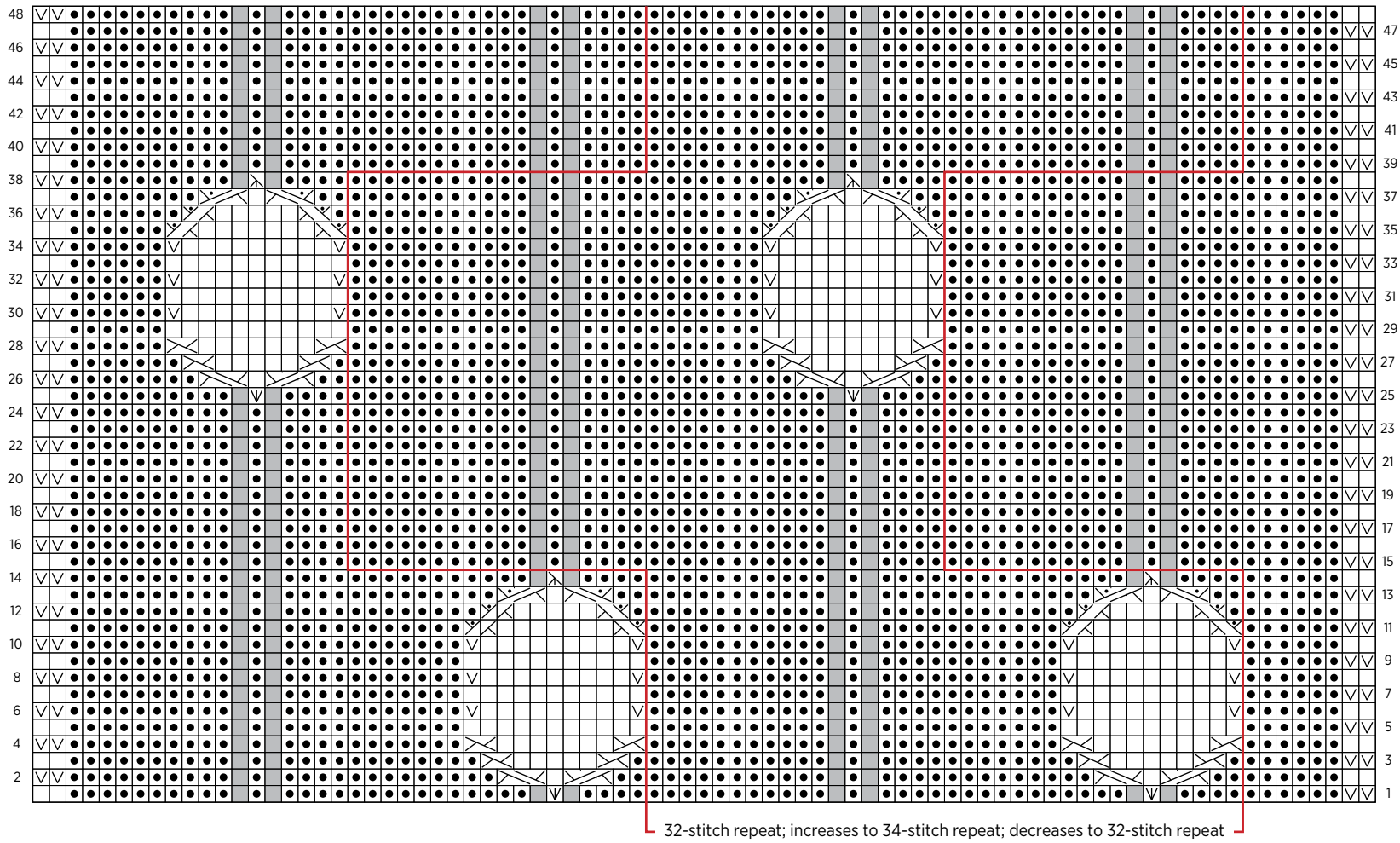


Soap Bubble Wrap

PATTERN CHART



KEY

- | | | | |
|--|--------------------------------|--------------------------------|--------------------------------|
| knit on right side (k),
purl on wrong side (p) | no stitch | Left Twist (LT) | 1/2 Left Cross (1/2 LC) |
| purl on right side (p),
knit on wrong side (k) | Centered Double Increase (CDI) | Right Twist (RT) | 1/2 Right Cross (1/2 RC) |
| slip 1 with yarn in back on right side,
slip 1 with yarn in front on wrong side | Double Decrease (DD) | 1/1 Left Purl Cross (1/1 LPC) | 1/2 Left Purl Cross (1/2 LPC) |
| | | 1/1 Right Purl Cross (1/1 RPC) | 1/2 Right Purl Cross (1/2 RPC) |

All Purl Soho projects and patterns are for home use only and are not to be resold or made for sale to third parties. © 2023 Purl Soho®

Purl Soho Patterns, including without limitation all images, contents and text located herein, are the copyrights and property of Purl Soho. All rights reserved.



PURL SOHO