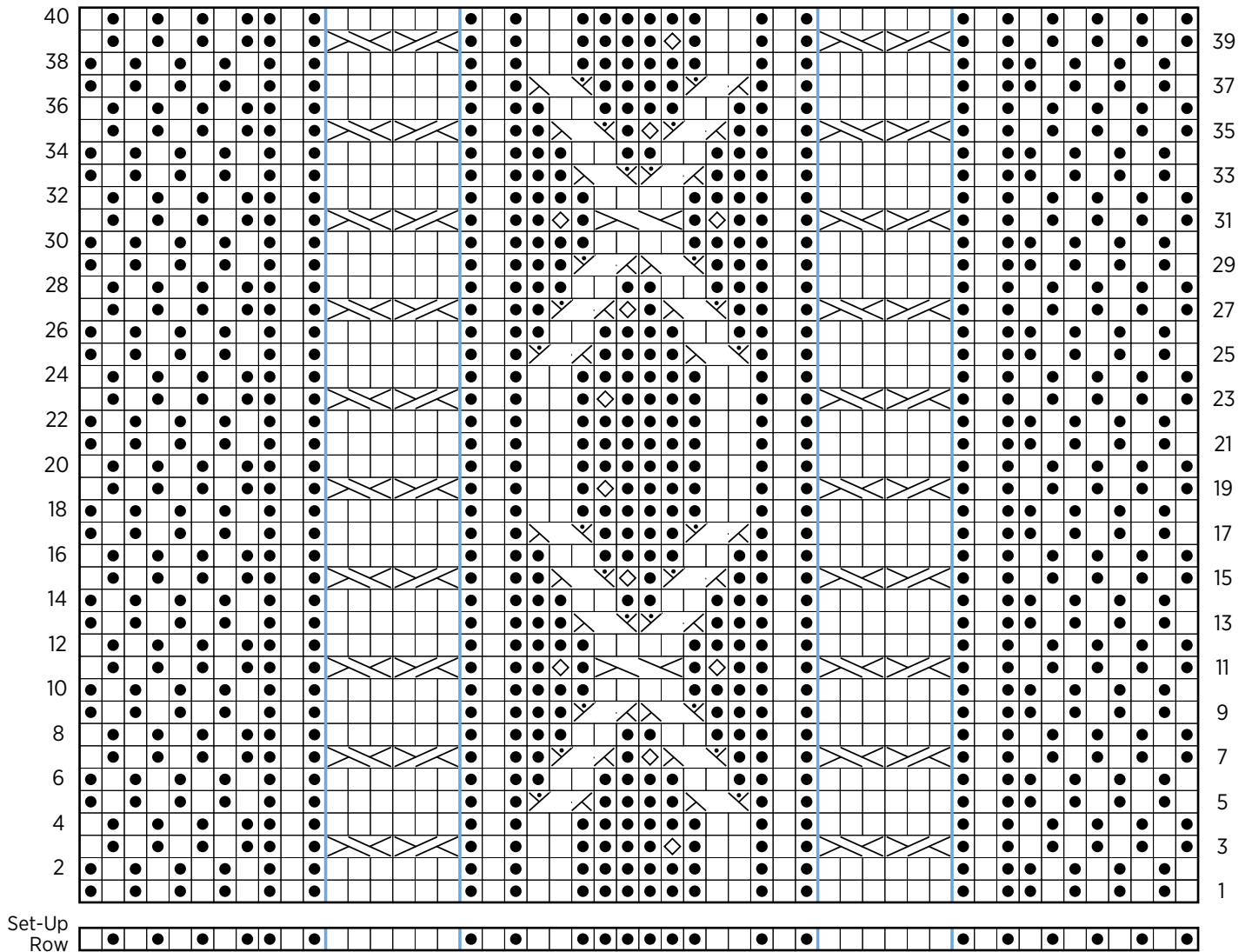



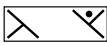

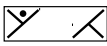

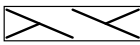
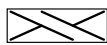


Bas-Relief Wrap

CABLE PATTERN CHART: SCARF



NOTE: Work Set-Up Row from left to right.

KEY

- | | | | |
|---|--|---|--------------------------------|
|  | knit on right side (k), purl on wrong side (p) |  | 2/1 Left Purl Cross (2/1 LPC) |
|  | purl on right side (p), knit on wrong side (k) |  | 2/1 Right Purl Cross (2/1 RPC) |
|  | make bobble (MB) |  | Cable 4 Front (C4F) |
|  | 1/2 Left Cross (1/2 LC) |  | stitch marker |
|  | 1/2 Right Cross (1/2 RC) | | |