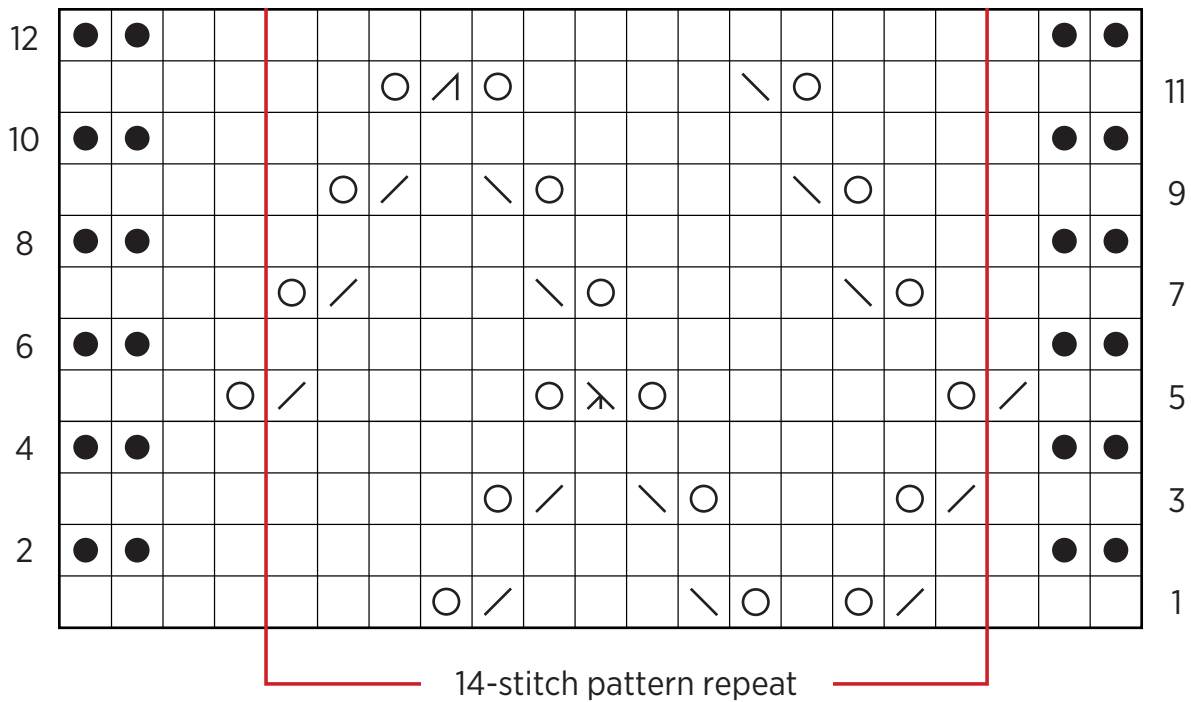


Wedding Shawl

PATTERN CHART



KEY

- knit on right side (k); purl on wrong side (p)
- purl on right side (p); knit on wrong side (k)
- knit 2 together (k2tog)
- slip, slip, knit (ssk)
- yarn over (yo)
- slip 1 knitwise, k2tog, pass
- knit 3 together (k3tog)