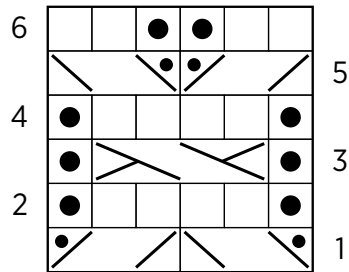


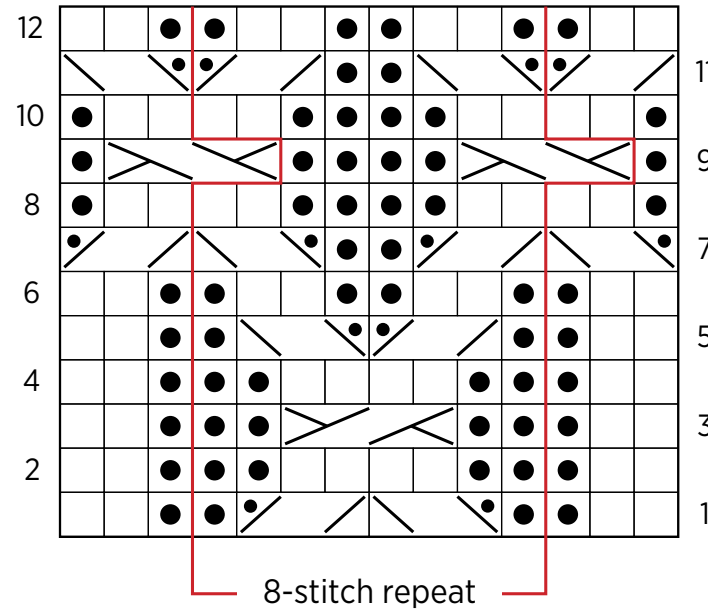
# Emblem Blanket

## CABLE PATTERN CHARTS

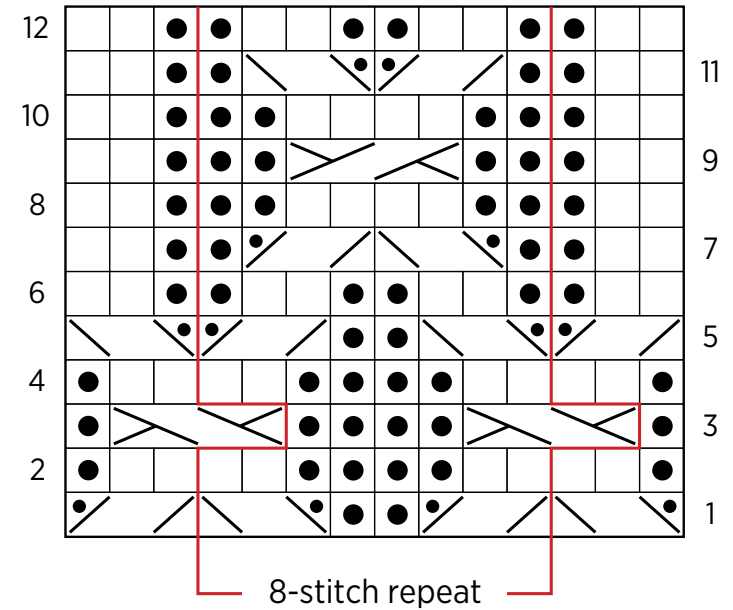
Cable Pattern 1





Cable Pattern 2

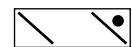



Cable Pattern 3



### KEY

-  knit on right side (k), purl on wrong side (p)
-  purl on right side (p), knit on wrong side (k)

 2/1 Left Purl Cross (2/1 LPC)

 2/1 Right Purl Cross (2/1 RPC)

 Cable 4 Front (C4F)

 Cable 4 Back (C4B)