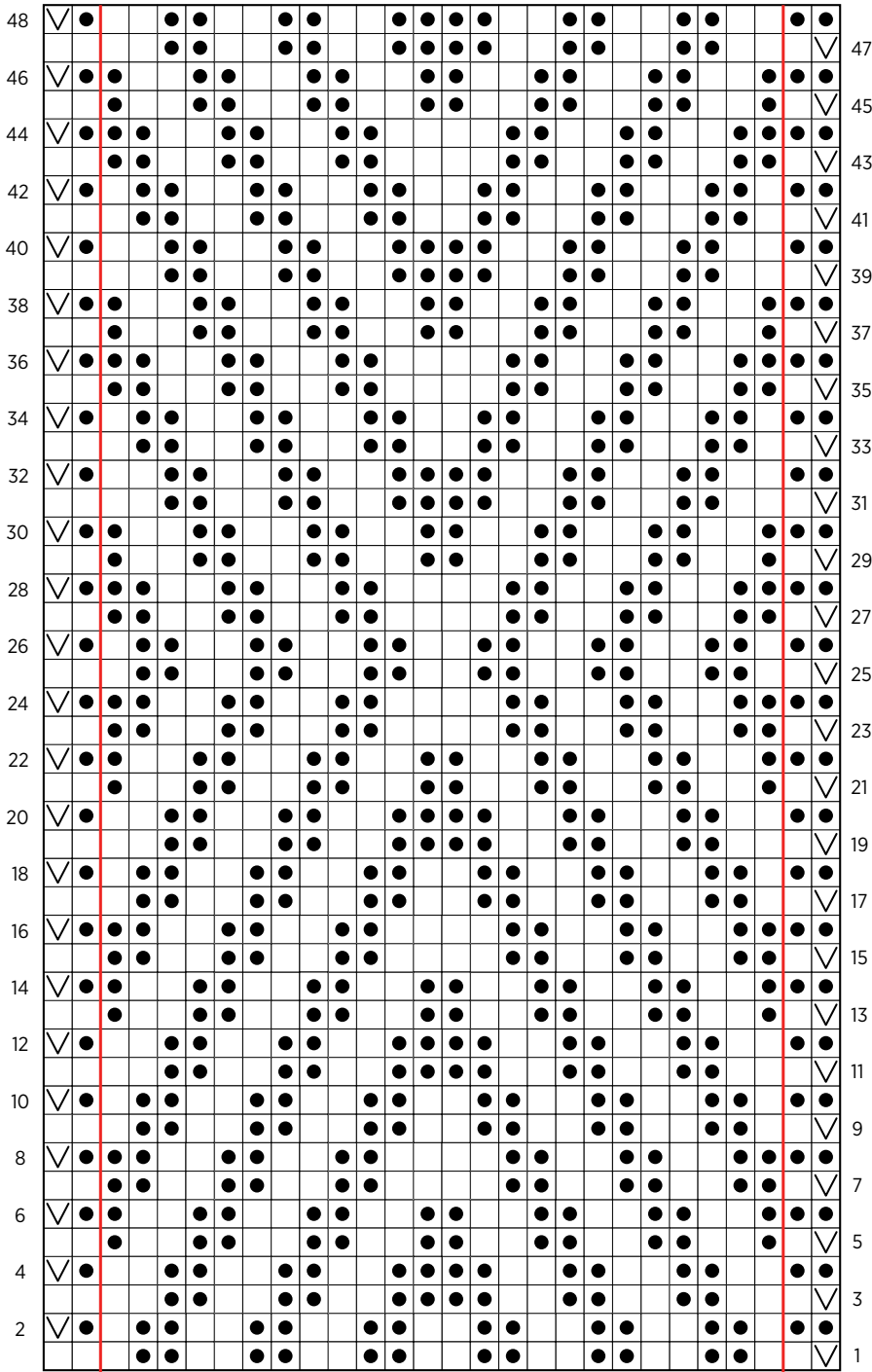


Tin Ceiling Washcloth + Hand Towel

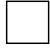


PATTERN CHART



24-stitch pattern repeat
Work twice for Washcloth,
work 3 times for Hand Towel

Work Rows 1-48
1 (3) time(s), then repeat
Rows 1-26 for Washcloth;
or Rows 1 and 2 for Hand Towel

KEY

-  knit on right side (k),
purl on wrong side (p)
-  purl on right side (p),
knit on wrong side (k)
-  slip 1 purlwise with yarn in front