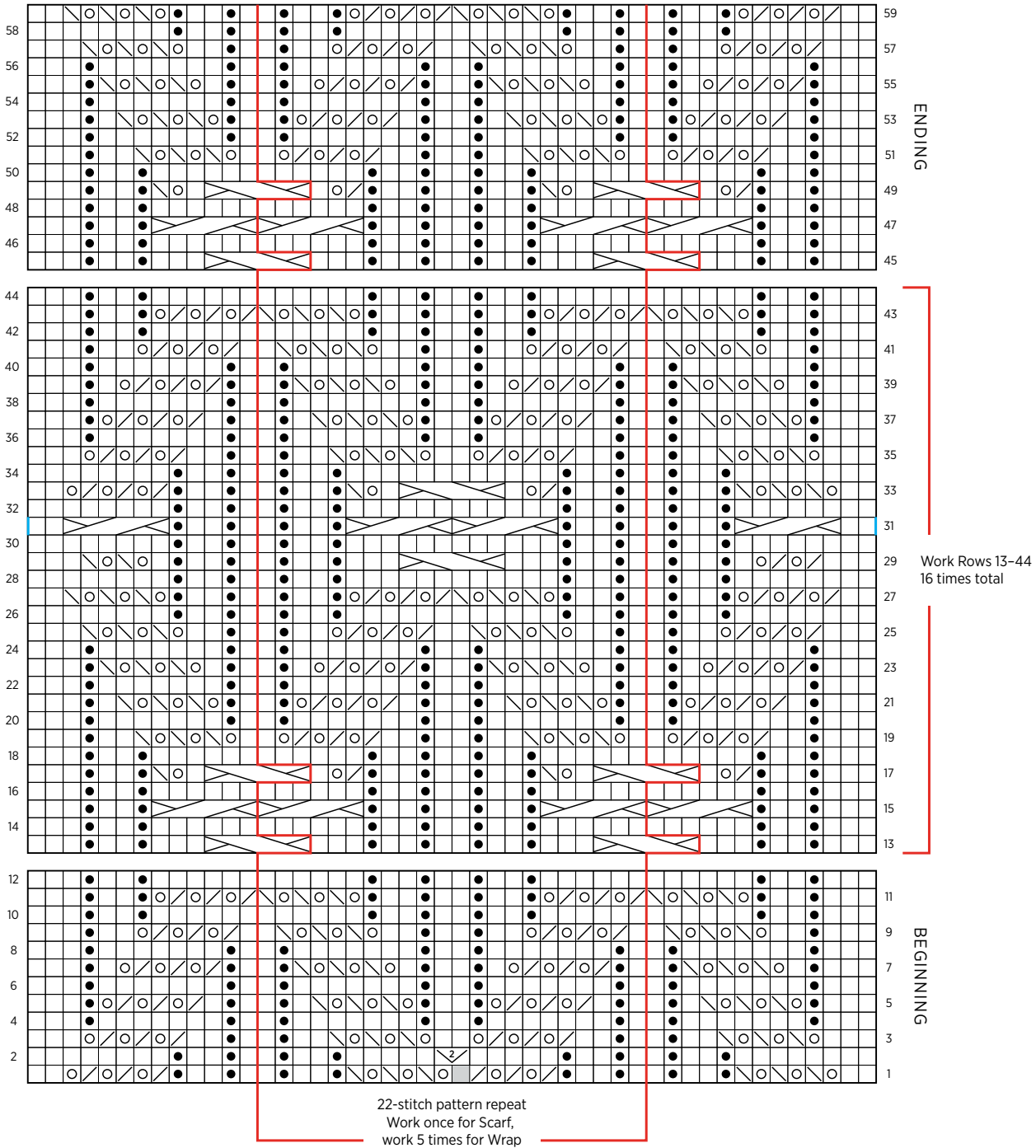


# Climbing Rose Wrap

## CLIMBING ROSE PANEL PATTERN CHART

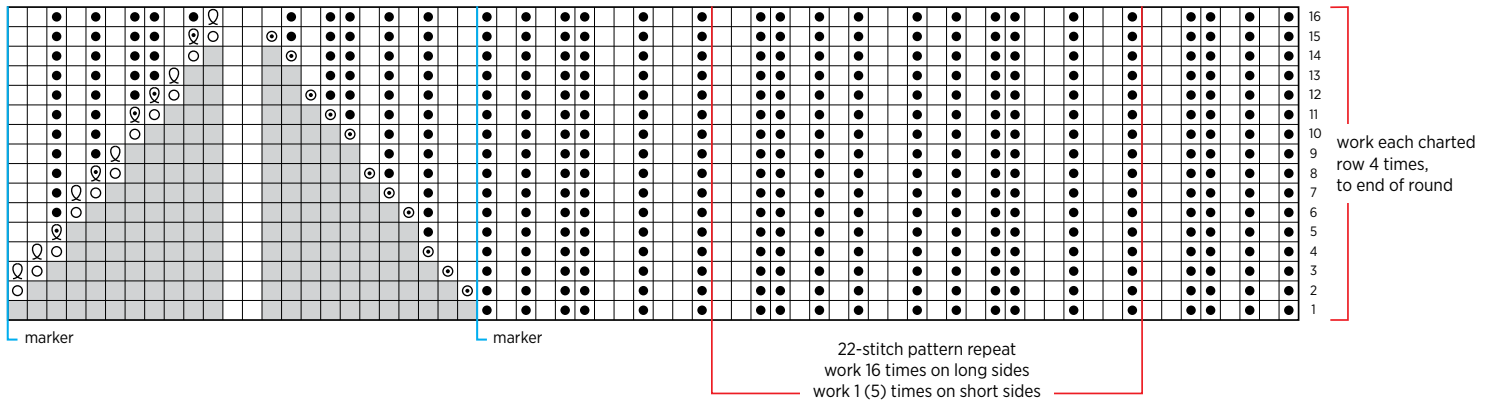


### KEY








- |   |                         |                         |
|---|-------------------------|-------------------------|
| knit on right side (k),<br>purl on wrong side (p) | knit 2 together (k2tog) | purl front and back     |
| purl on right side (p),<br>knit on wrong side (k) | slip, slip, knit (ssk)  | Cable 6 Back (C6B)      |
| yarn over (yo)                                    | no stitch               | Cable 6 Front (C6F)     |
|   |                         | removable stitch marker |

# Climbing Rose Wrap

## RIBBED EDGING PATTERN CHART



### KEY

	knit (k)		no stitch
	purl (p)		knit through back loop (k tbl)
	yarn over (yo)		purl through back loop (p tbl)
	backwards yarn over (byo)		