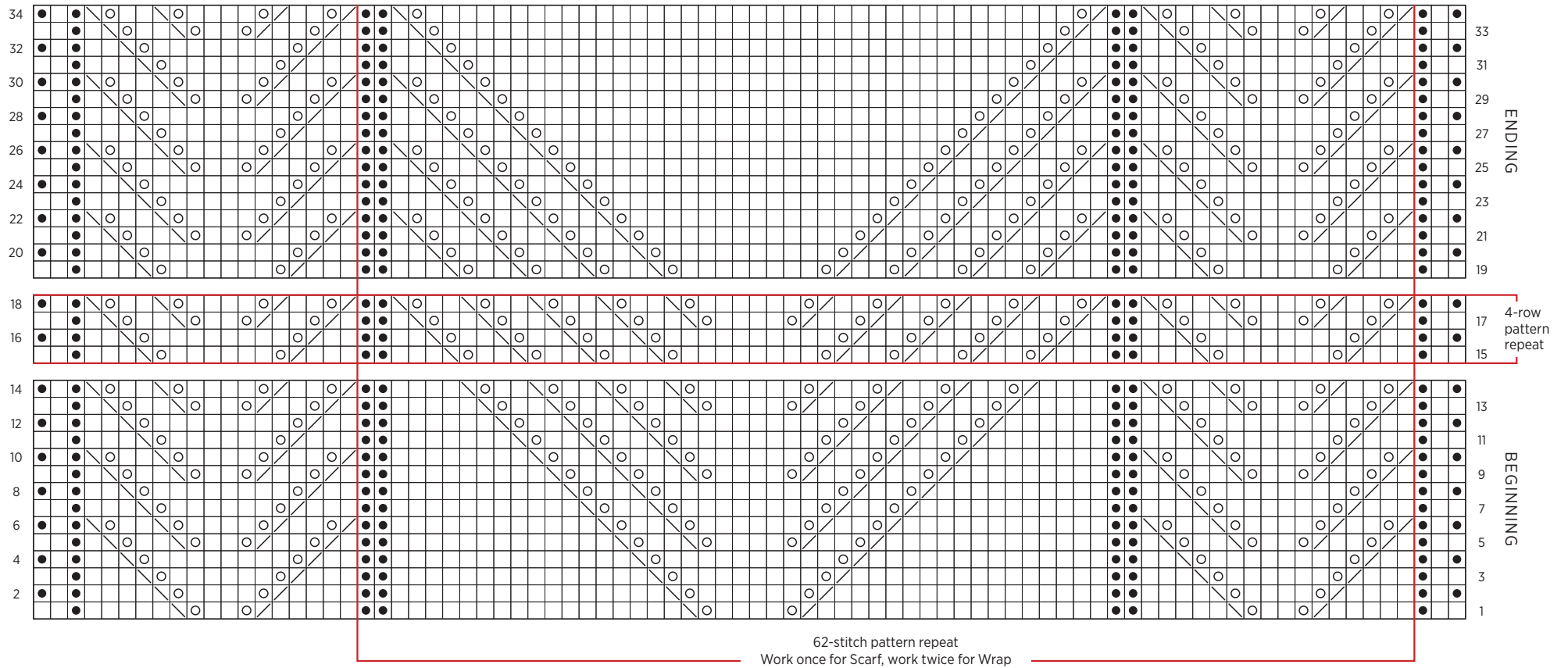


# Palmetto Wrap

## PATTERN CHART



### KEY

□ knit on right side (k),  
purl on wrong side (p)

● purl on right side (p),  
knit on wrong side (k)

○ yarn over (yo)

⤵ knit 2 together on right side (k2tog),  
purl 2 together on wrong side (p2tog)

⤵ slip slip knit on right side (ssk),  
slip slip purl on wrong side (ssp)