

# Triangular Triangles Wrap

## PATTERN CHART

### KEY

- knit on right side (k), purl on wrong side (p)
- purl on right side (p), knit on wrong side (k)
- knit 2 together on right side (k2tog),  
purl 2 together on wrong side (p2tog)
- knit 3 together on right side (k3tog)

Chart 2

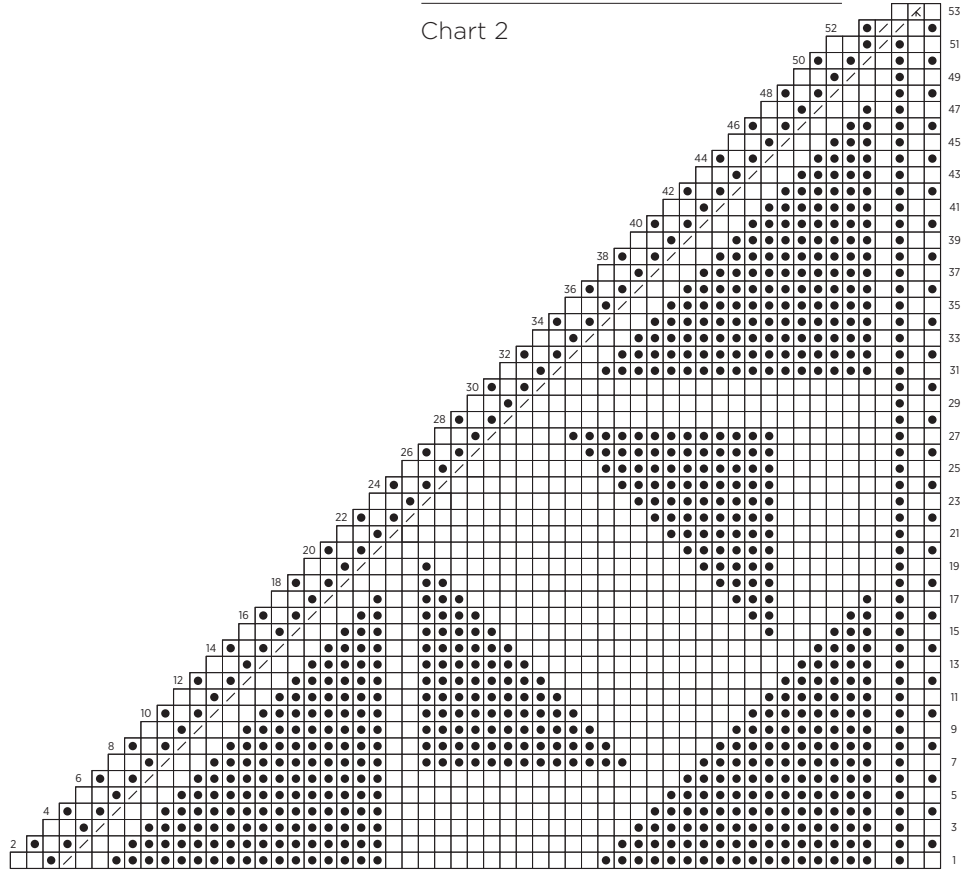


Chart 1

