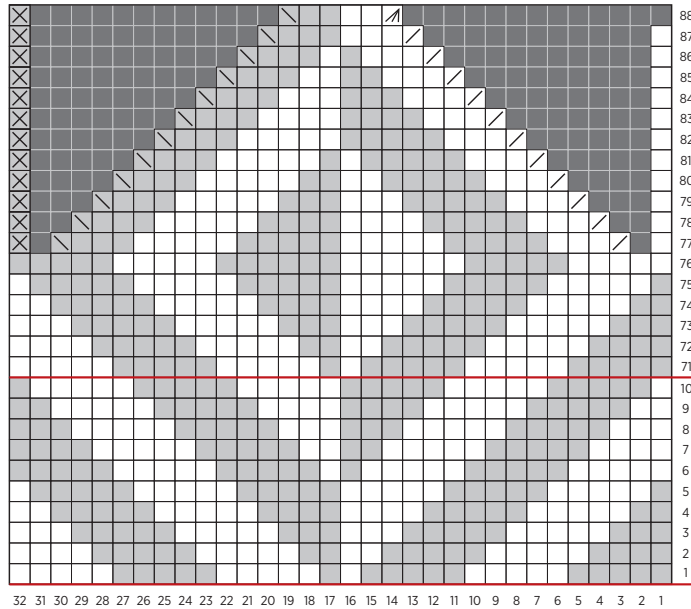


Herringbone Mittens: Adult Medium

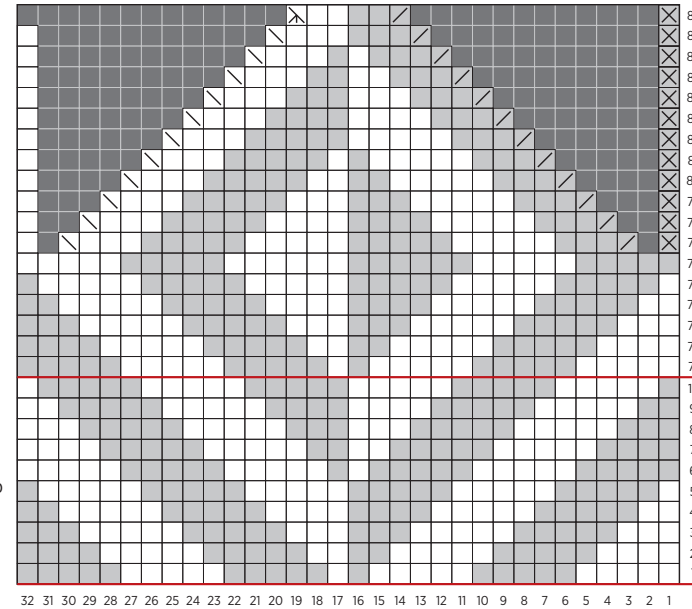
PATTERN CHARTS

Right Hand



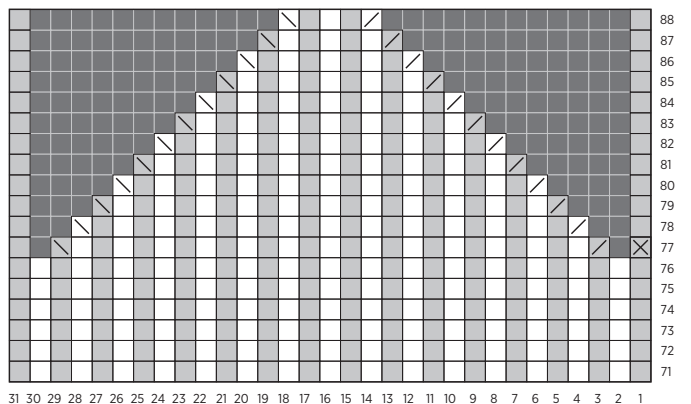
Work Rows 1-10
a total of 7 times
(Be sure to add Thumb
Hole when piece
measures 4 inches.)

Left Hand

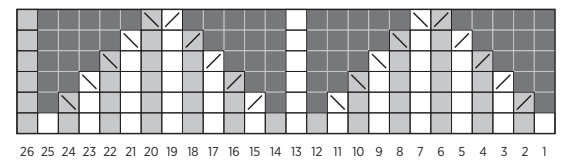


Work Rows 1-10
a total of 7 times
(Be sure to add Thumb
Hole when piece
measures 4 inches.)

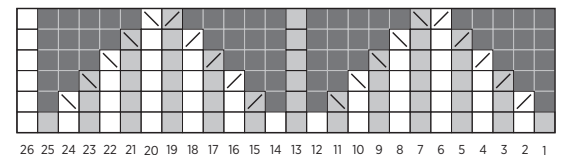
Pin Stripe Hand Top



Right Thumb Top



Left Thumb Top



KEY

- | | | |
|----|----|--|
| MC | CC | |
| | | knit |
| | | knit 2 together |
| | | slip, slip, knit |
| | | knit 3 together |
| | | slip, slip, slip, knit
(see Special Instructions) |
| | | knit, trapping float
(see Special Instructions) |
| | | no stitch |