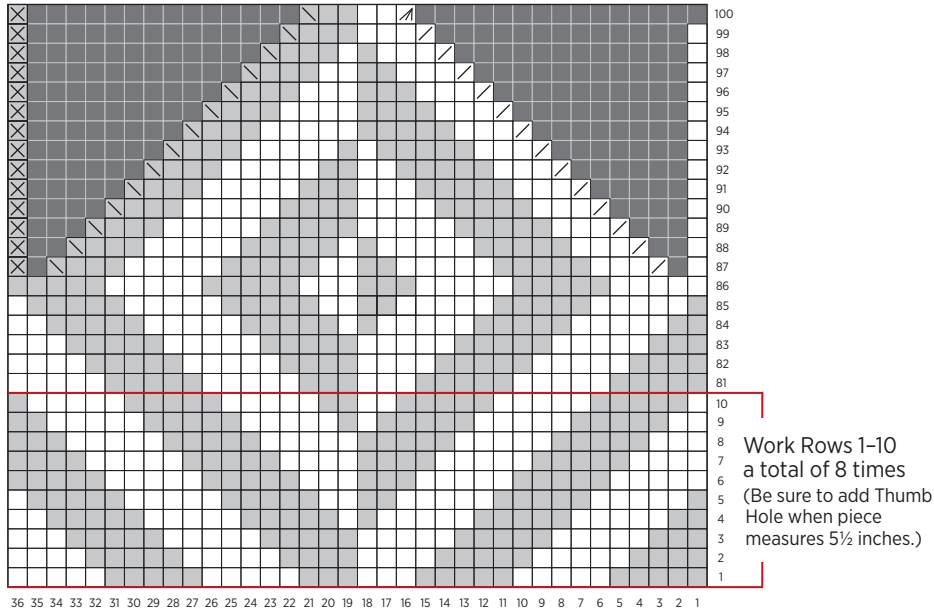


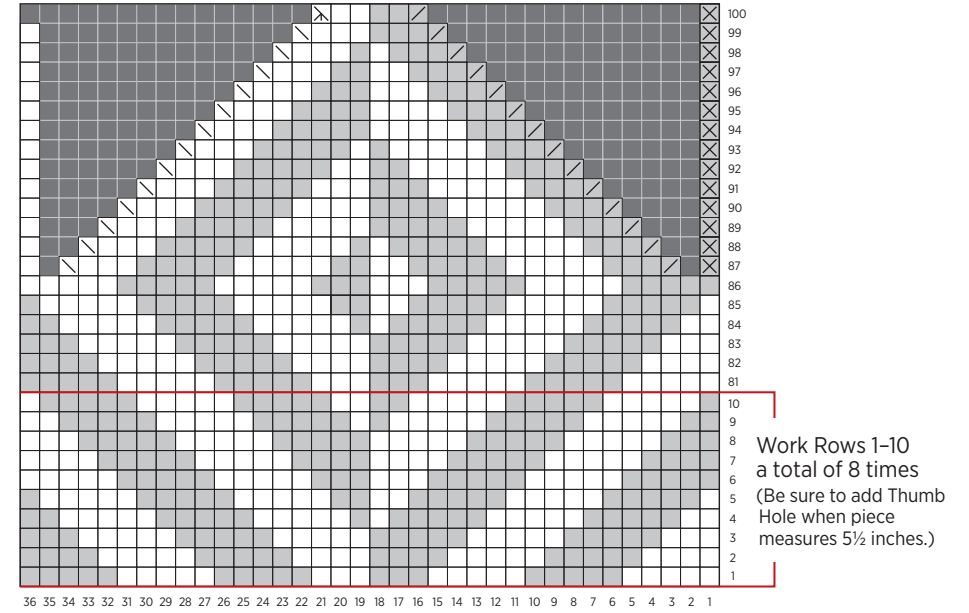
Herringbone Mittens: Adult Large

PATTERN CHARTS

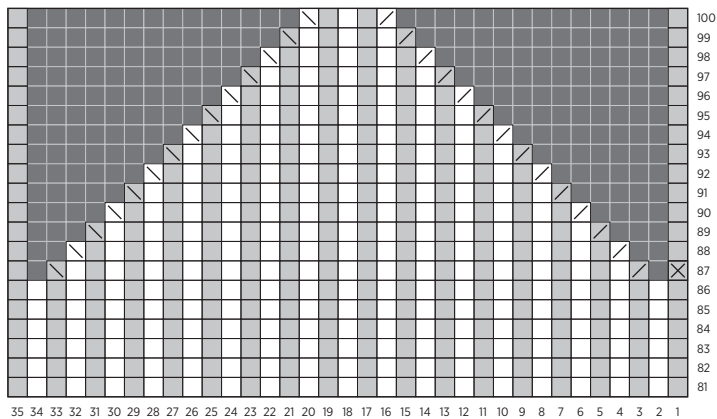
Right Hand



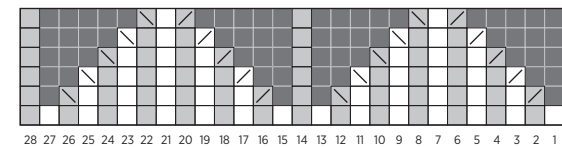
Left Hand



Pin Stripe Hand Top



Thumb Top



KEY

MC	CC		MC	CC	
		knit			knit 3 together
		knit 2 together			slip, slip, slip, knit (see Special Instructions)
		slip, slip, knit			knit, trapping float (see Special Instructions)
					no stitch