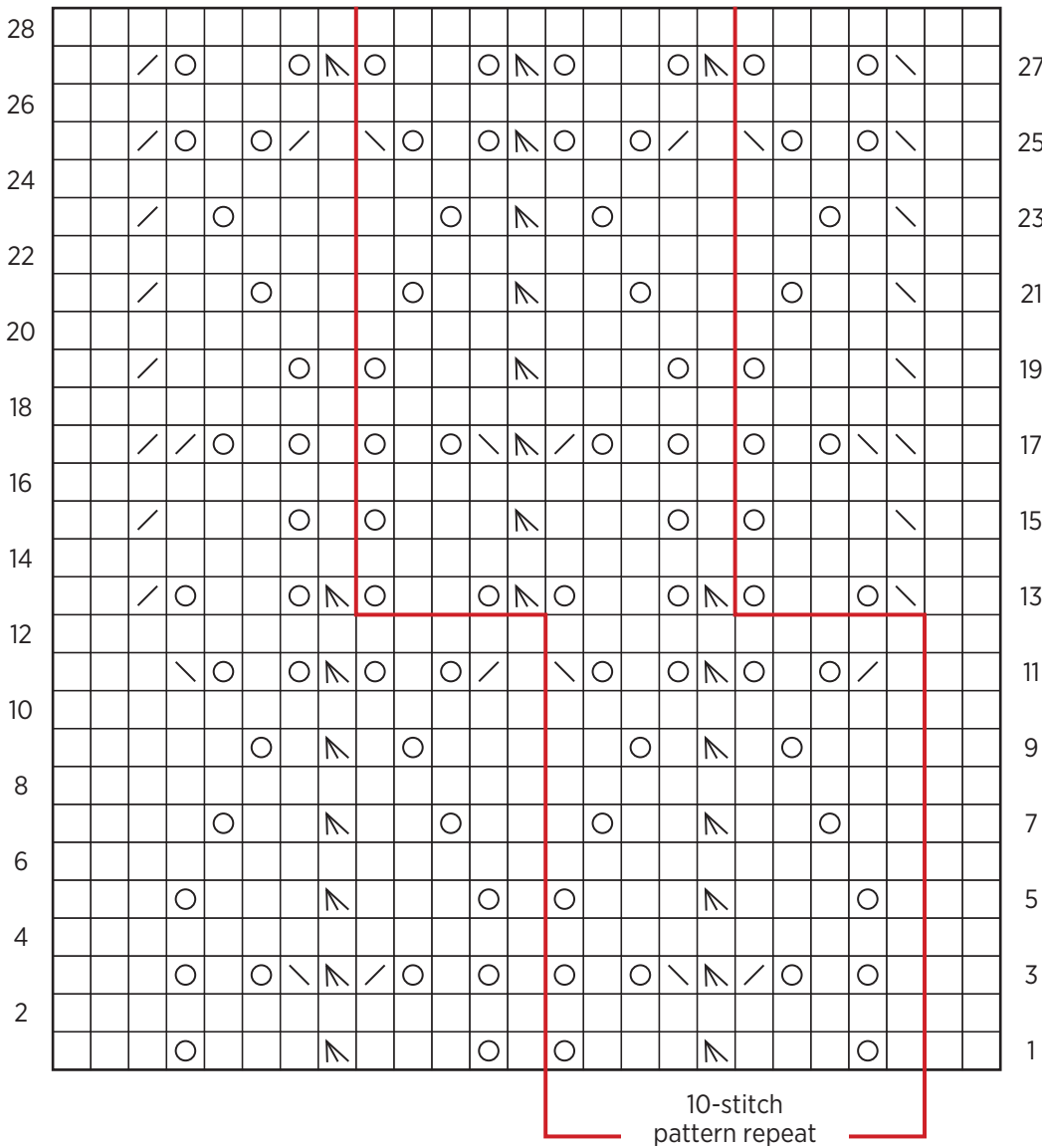
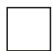






# Cumulus Wrap

## CENTER PANEL PATTERN CHART



### KEY

-  knit on right side (k), purl on wrong side (p)
-  knit 2 together (k2tog)
-  slip, slip, knit (ssk)
-  yarn over (yo)
-  slip 1, knit 2 together, pass slipped stitch over (slip 1, k2tog, pss0)