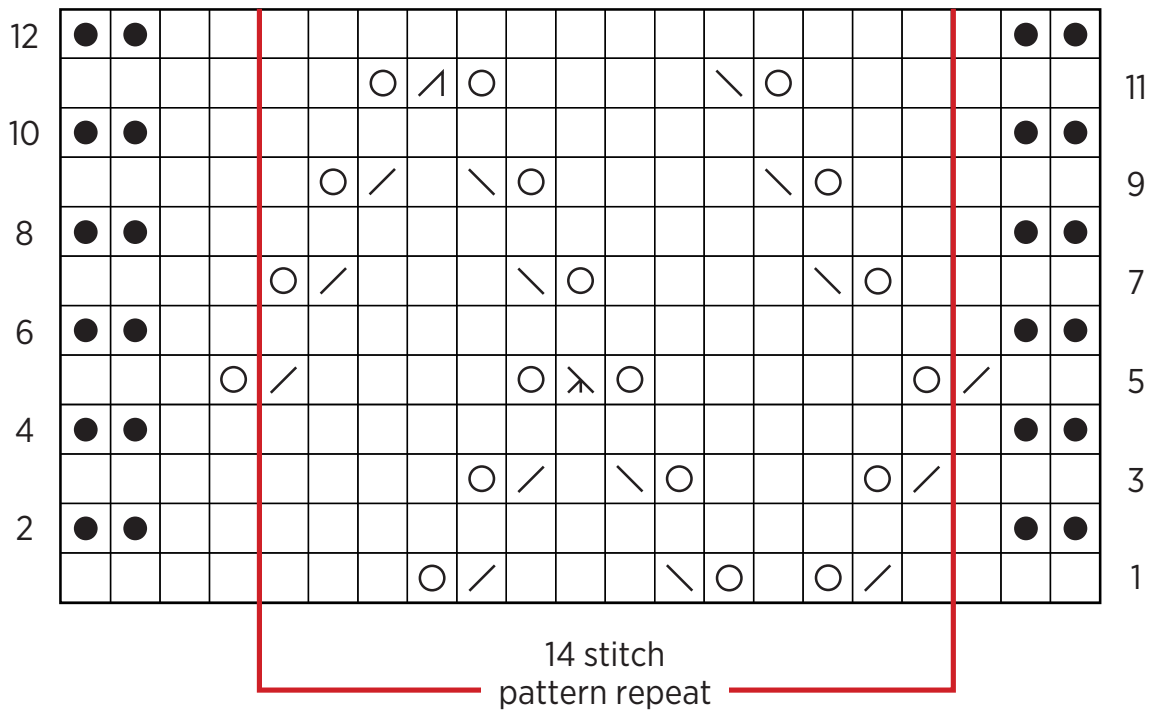


Wedding Shawl

PATTERN CHART



KEY

- knit on right side; purl on wrong side
- purl on right side; knit on wrong side
- knit 2 together on right side; purl 2 together on wrong side
- slip, slip, knit on right side; purl 2 together through back loop on wrong side
- yarn over
- slip 1 knitwise, k2tog, pass on right side
- knit 3 together on right side