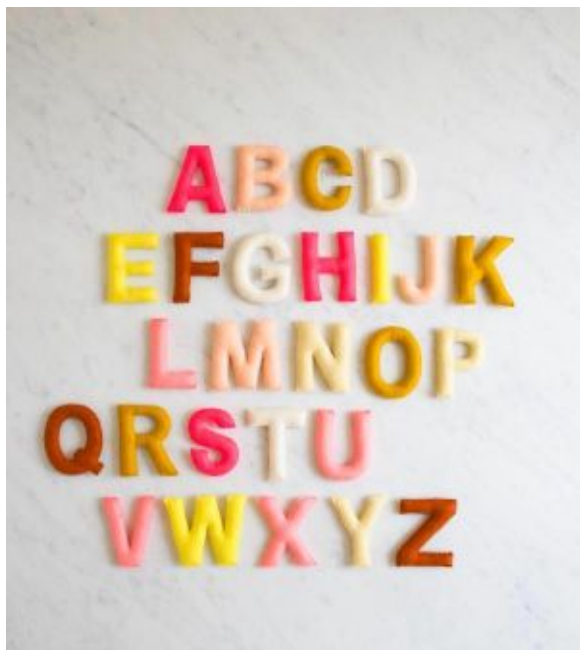


## Hand Sewn Felt Alphabet



### MATERIALS

To make one complete alphabet you will need...

- 1 Purl Soho Felt Bundle. I used the color Pomelo.
- Gutermann's Cotton Thread in coordinating colors. I used colors 1040, 4950, 2030, and 1685.
- Your preferred fabric-marking tool for transferring the letter templates onto the felt. I used Fons and Porter's Chalk Pencils. For a detailed guide to a variety of marking tools, please visit our Fabric Markers Tutorial.
- 1 bag of Fairfield's Poly-fil

- Optional (for making a banner): 1 spool of DMC's Pearl Cotton Embroidery Thread. I used color B5200.
- A free Hand Sewn Felt Alphabet Template.

### SIZE

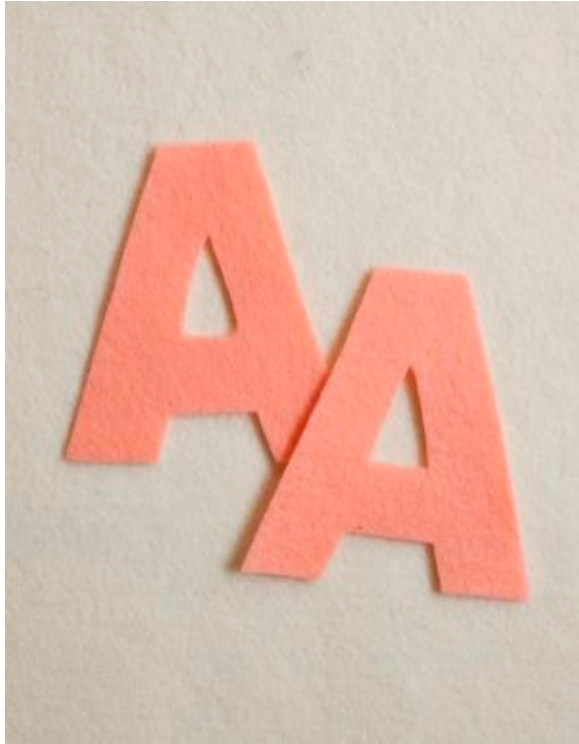
Each letter is approximately 3 inches tall.

### PATTERN

### CUT



Using the Alphabet Template and your preferred fabric-marking tool, trace the letters onto the felt pieces. For each letter you will need two identical felt pieces.



Cut the letters out. For precise, clean cuts, I recommend using large fabric shears for the outer edges and small sharp scissors for the inside shapes.

## SEW AND STUFF

The letters are sewn together with a whip stitch and are filled with stuffing as you go. Here's how:

Thread a length of cotton thread onto a needle and tie a small knot at the end.

Stack two identical shapes on top of each other and pull the needle from the inside of one of the pieces to the outside, exiting about 1/8 inch from the edge and leaving the knot sandwiched between the two layers.



When working with letters with an inside cutout, sew around the edge of the cutout first. When deciding where to start stitching on the outer edge of the letter, think about how the shape will be filled with stuffing as you stitch.

Push the needle from the bottom up through both layers of fabric, about 1/16 to 1/8 inch from the first stitch and approximately 1/8 inch from the edge. The thread will be wrapped around the side of the stack.

Continue to stitch in this manner, filling with stuffing as you go.

When you have reached the point where you began stitching (or the end of your thread), stitch in place 3 or 4 times to secure the thread. Pull the needle through the body of the letter and snip the thread at the exit point to hide the end.

## MAKE A BANNER (Optional)

If you wish to create a banner, you can attach a length of Embroidery Thread to the back of the letters for hanging. Here's how:

Cut the Embroidery Thread to your desired length (it should be long enough to accommodate all the letters you will use, plus extra on either side for hanging) and thread on a needle.



Starting with the first letter, hold the shape in your hand with the wrong side facing up. Pick up a ¼-inch stitch about 1/8 inch in from the top right corner, going through only one layer of felt. Pull the thread through until only the amount left for hanging extends past the right edge of the letter.



If the letter shape has a long top edge, pick up another stitch on the left side.



If the letter shape has a second section along the top, pick up another stitch on this section (as shown with the U and H, above).

Repeat with the remaining letters, leaving ¼ - ½ inch between each shape. Turn your banner around and hang it up!

<http://www.purlbee.com/2014/08/28/hand-sewn-felt-alphabet/>

Posted : August 28, 2014