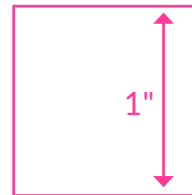


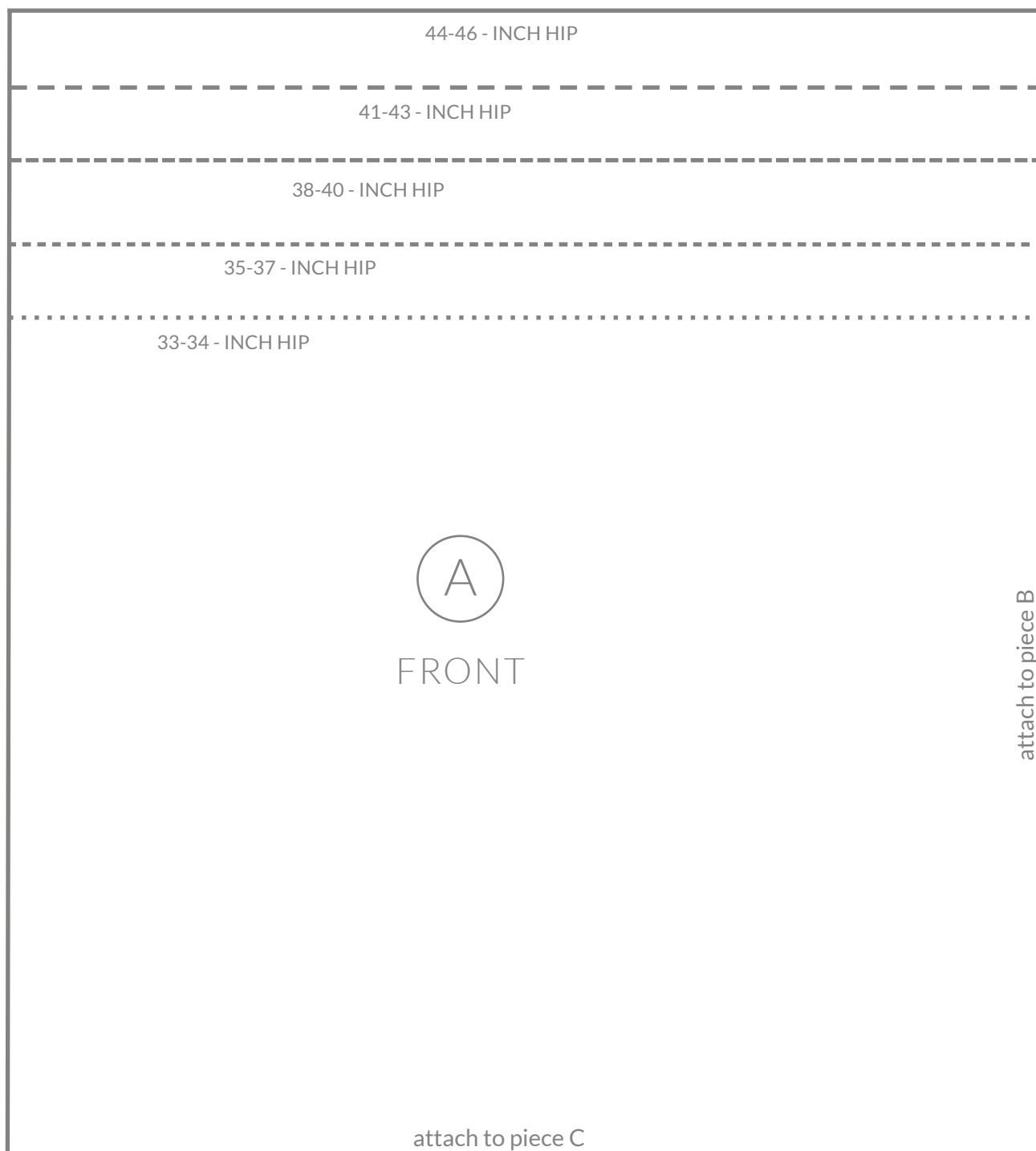
CITY GYM SHORTS · WOMEN

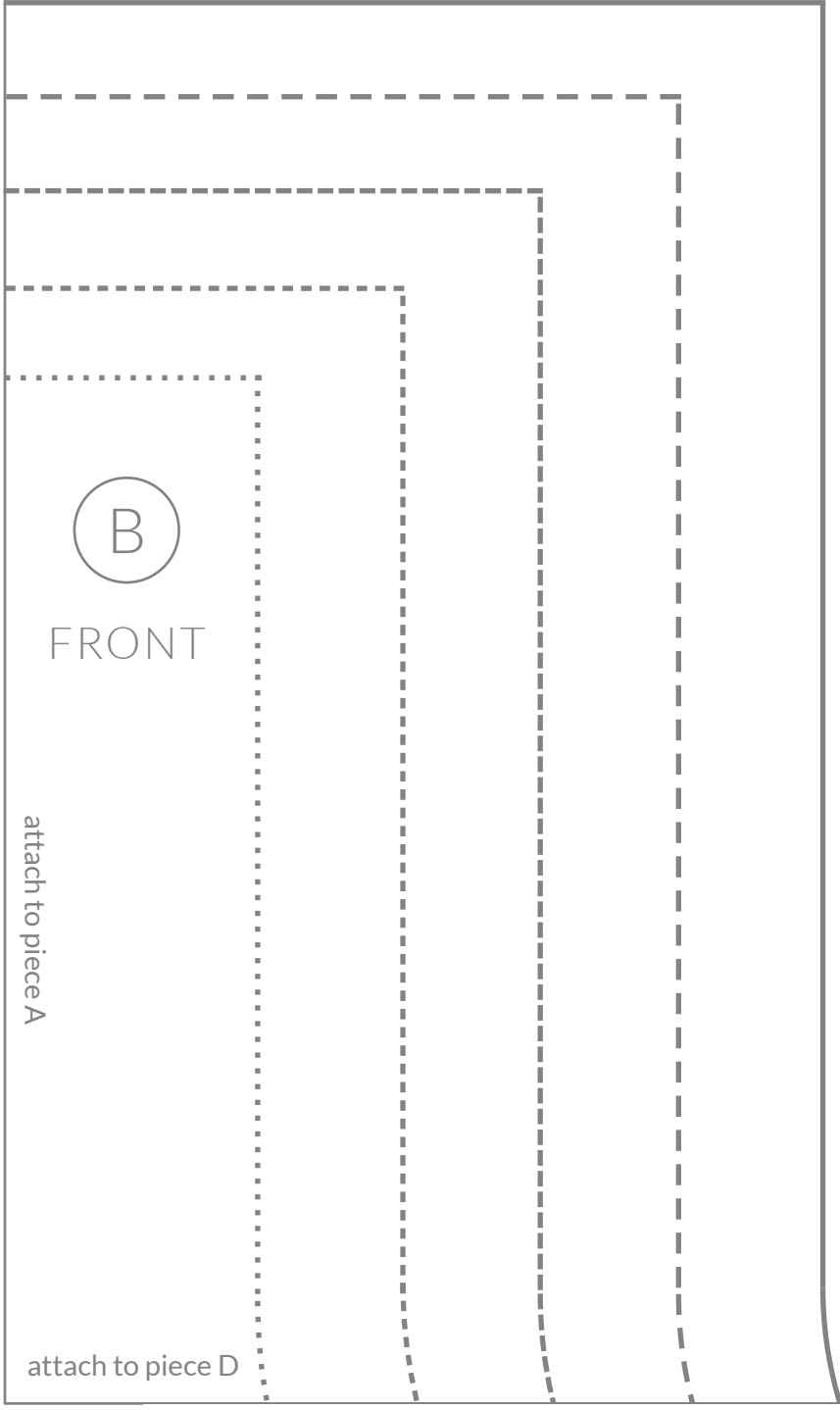


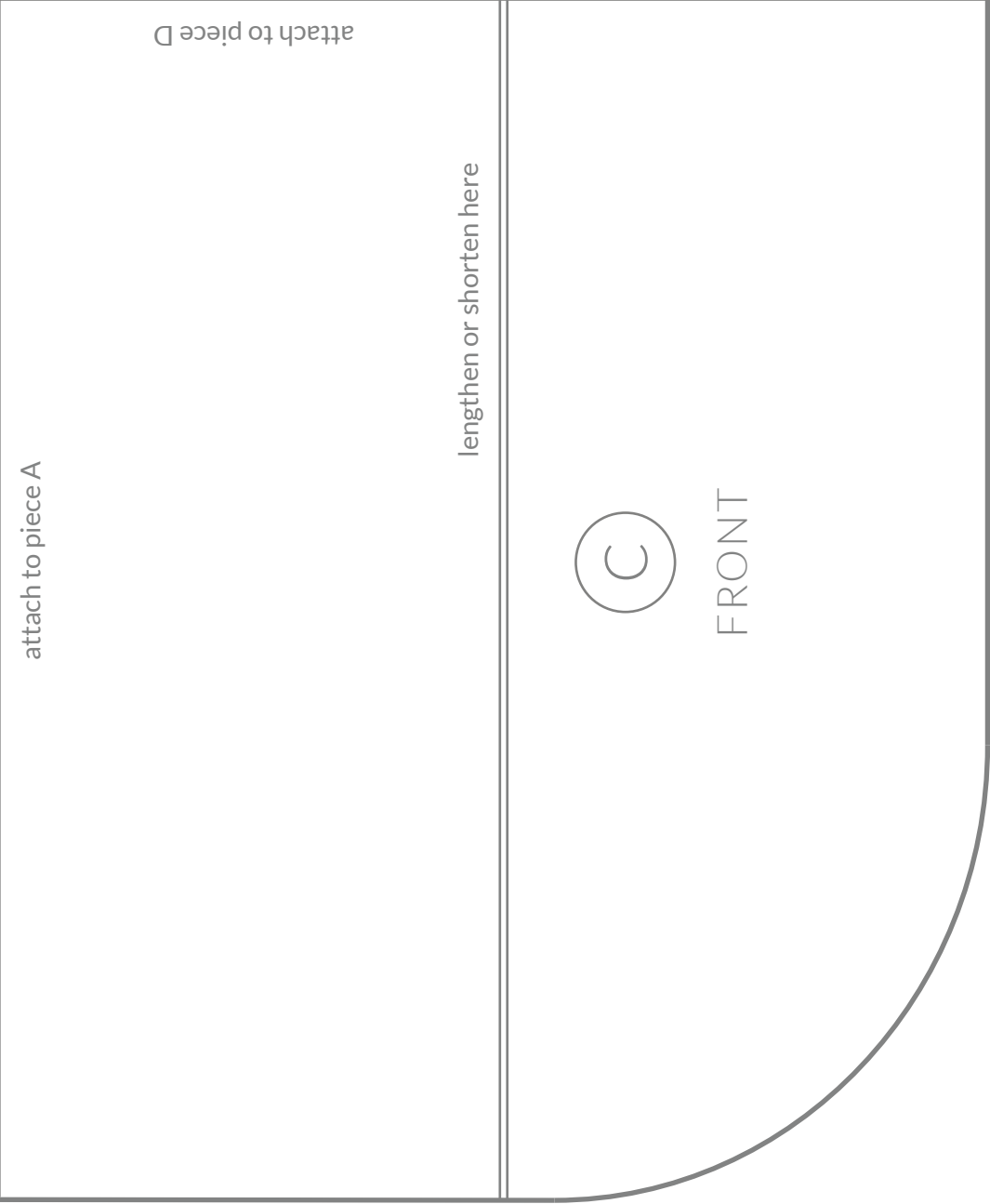
Before you cut out the template, please make sure this square measures 1 inch. If it doesn't, check your printer settings to verify you are printing at 100%.

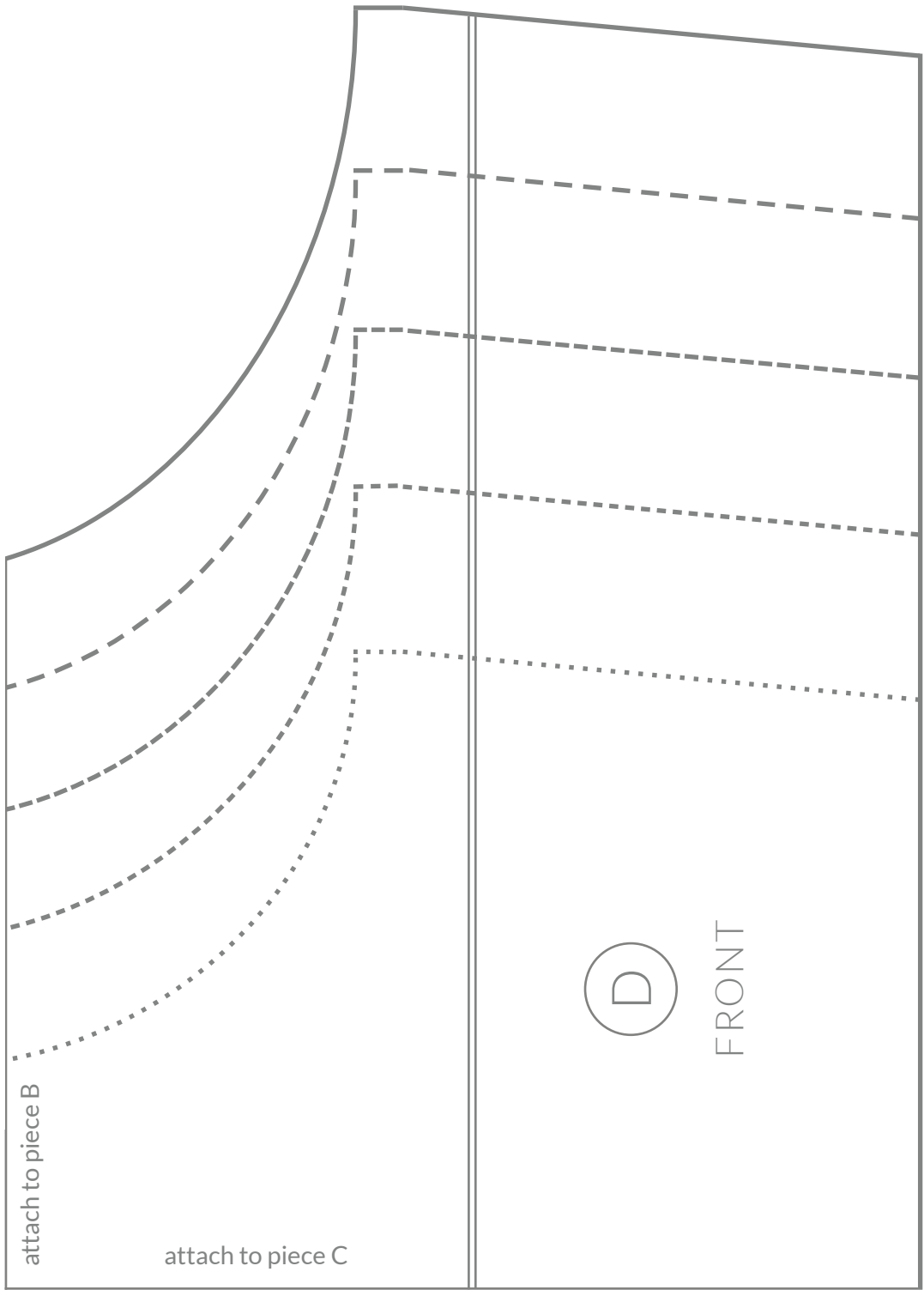
A PATTERN FROM THE PURL BEE!

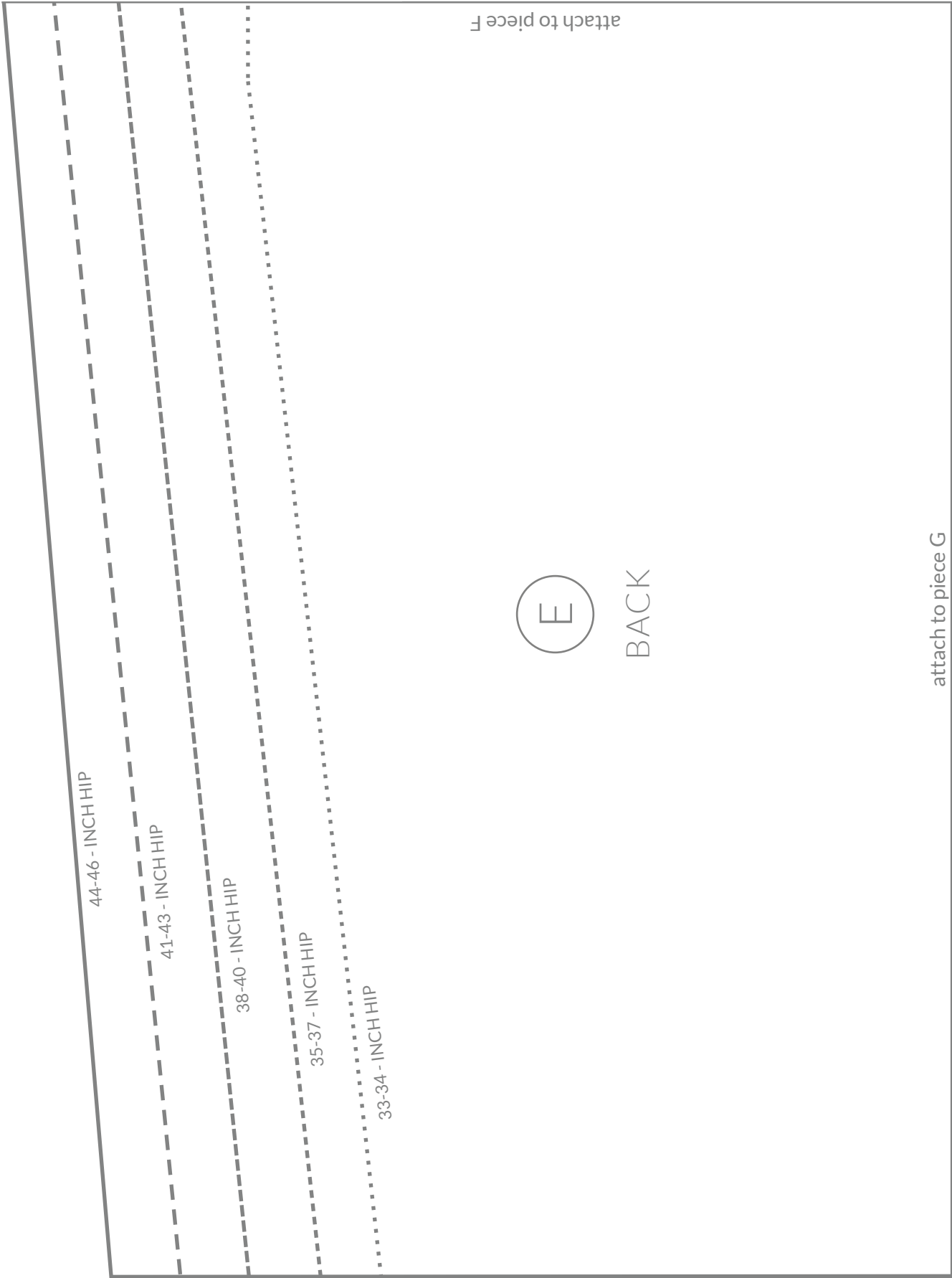
This pattern is copyright and the property of Purl Soho.
This pattern and project are for home use only, not for resale.

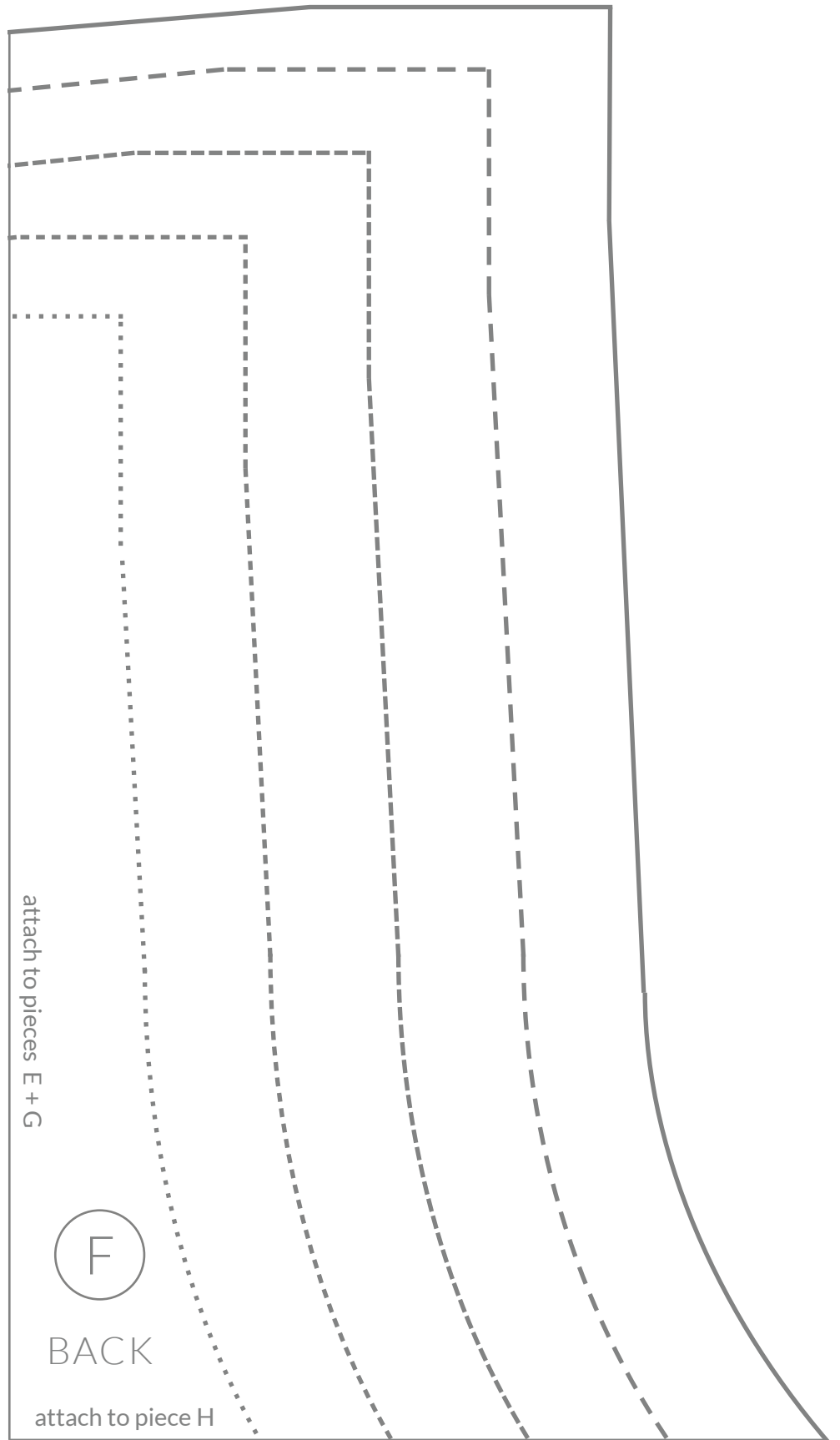










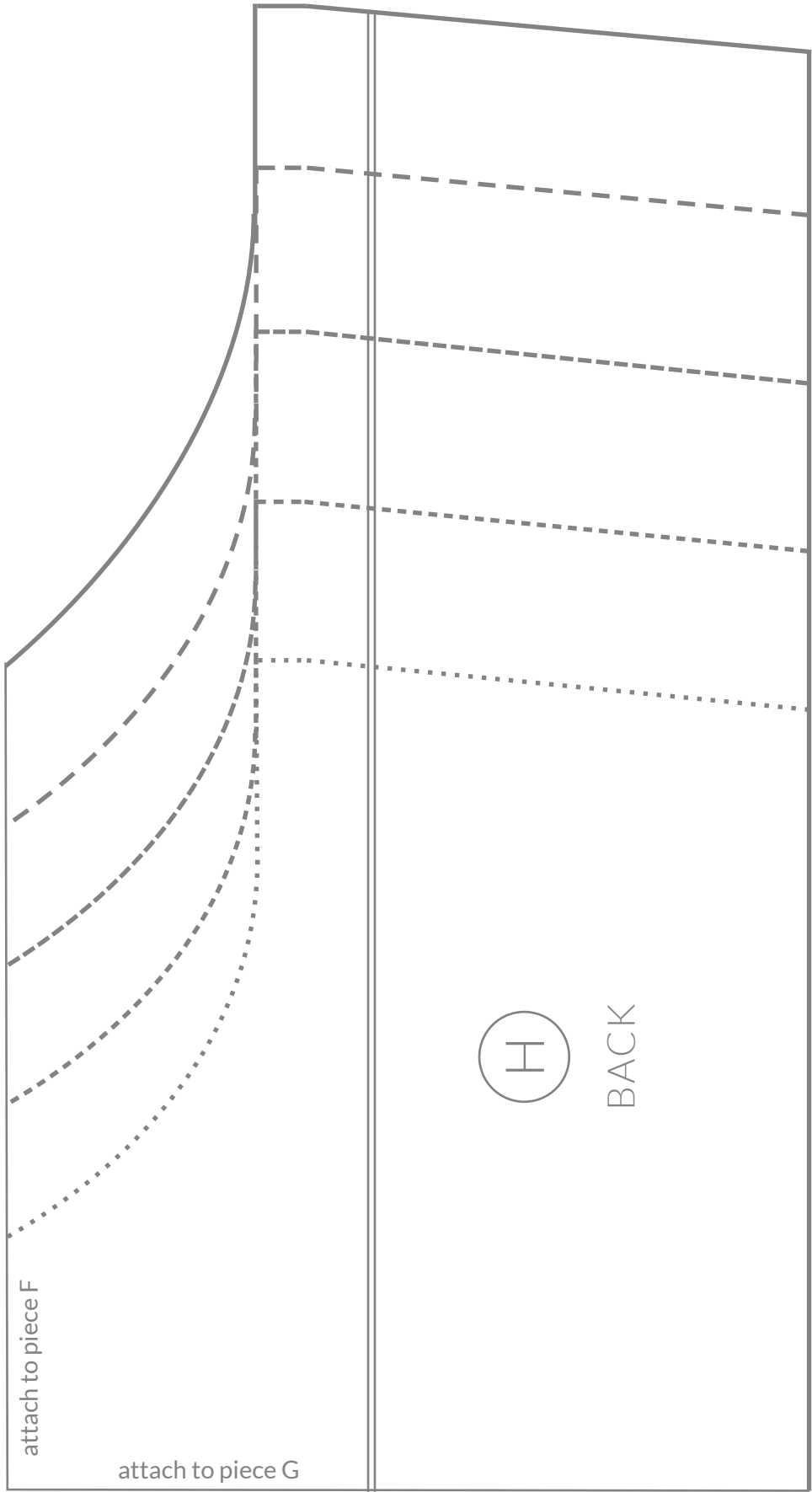


attach to pieces E + G

F

BACK

attach to piece H



attach to piece E

G

BACK

attach to pieces H + F

lengthen or shorten here