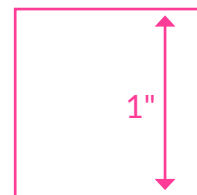


Purl SOHO

WINTER BABY BONNET

A PATTERN FROM THE PURL BEE!

This pattern is copyright and the property of Purl Soho.
This pattern and project are for home use only, not for resale.

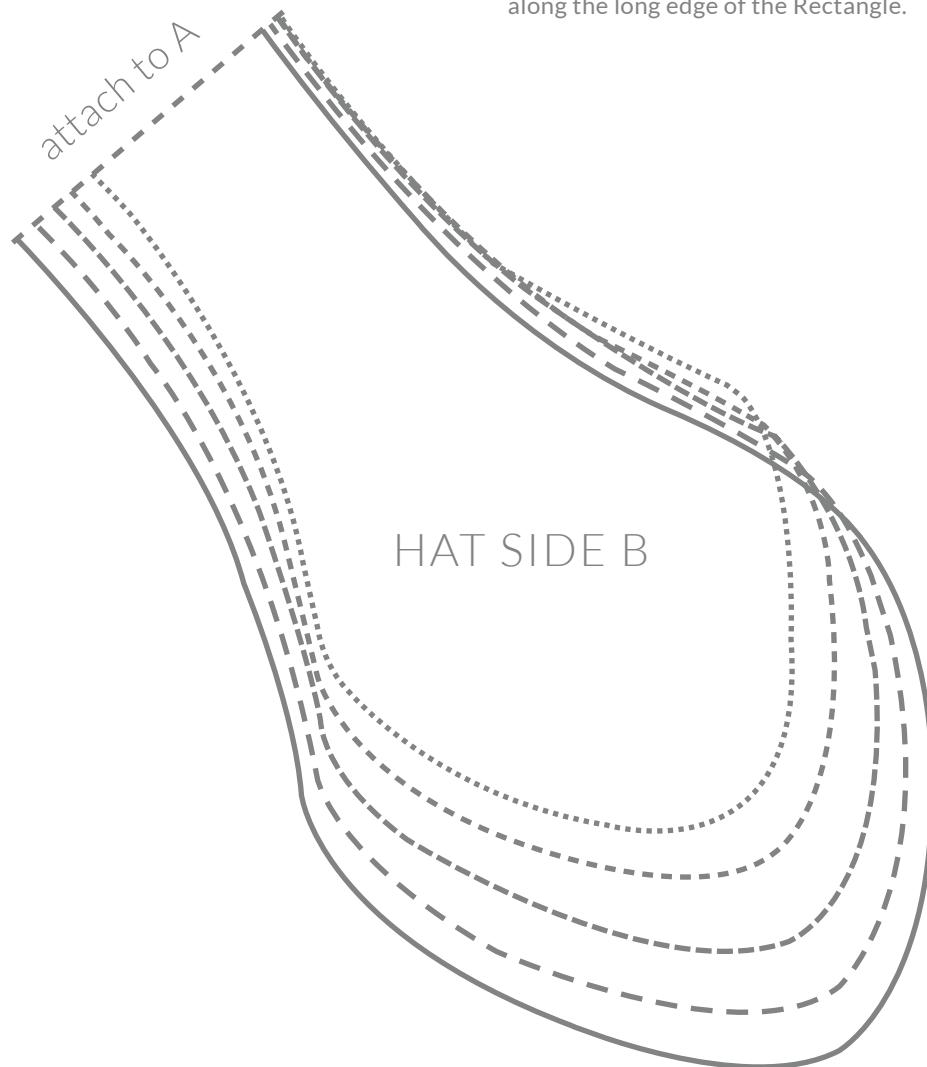


Before you cut out the template, please make sure this square measures 1 inch. If it doesn't, check your printer settings to verify you are printing at 100%.

INSTRUCTIONS

Use this template to cut 2 Hat Sides from both the Lining and the Outer Fabrics, making sure to line up the grain line.

For each Bonnet you will also cut two rectangles: one from the Lining and one from the Outer Fabric. The rectangles should be $3\frac{1}{2}$ by $11\frac{1}{2}$ inches for size 0-3 months, $3\frac{1}{2}$ by $12\frac{1}{2}$ inches for size 3-6 months, $3\frac{3}{4}$ by $13\frac{1}{2}$ inches for size 6-12 months, $3\frac{3}{4}$ by $14\frac{1}{2}$ inches for 12-18 months, or 4 by $15\frac{1}{2}$ inches for 18-24 months. The grain line of the Lining should run along the long edge of the Rectangle.

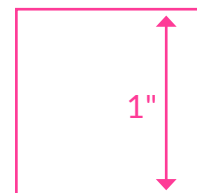


Purl SOHO

WINTER BABY BONNET

A PATTERN FROM THE PURL BEE!

This pattern is copyright and the property of Purl Soho.
This pattern and project are for home use only, not for resale.



Before you cut out the template, please make sure this square measures 1 inch. If it doesn't, check your printer settings to verify you are printing at 100%.