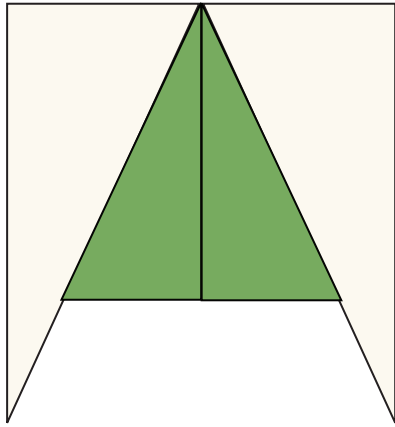
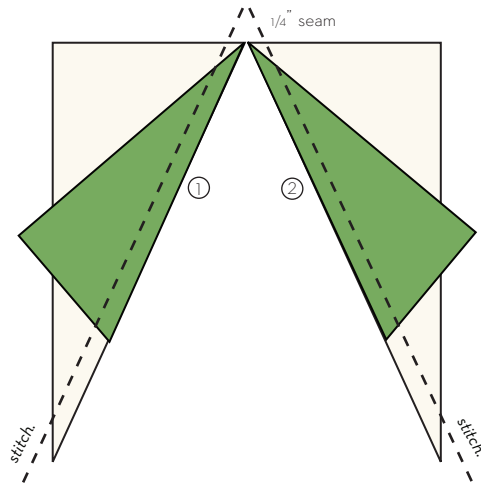


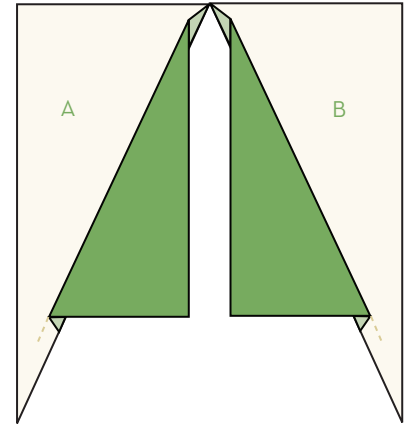
2. Forest Quilt: Tree Blocks: Sewing



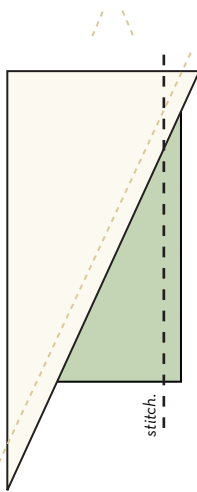
1. lay out your tree pieces.



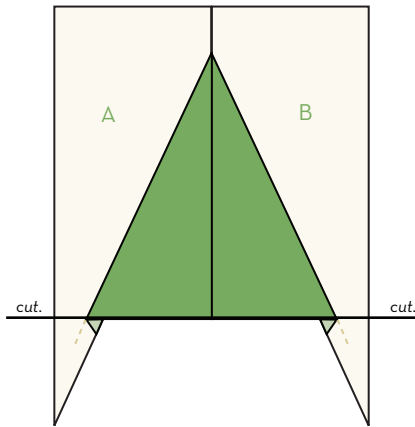
2. sew seams 1 and 2, right sides together, with a 1/4" seam allowance. Press seams flat, to the green side.



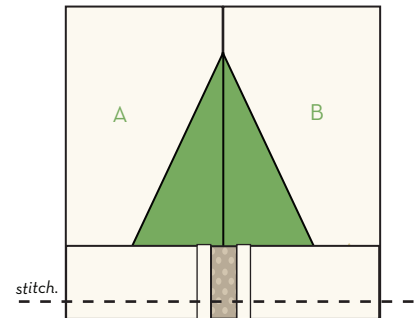
3. Lay out your tree, and place side B directly on top of side A, right sides together.



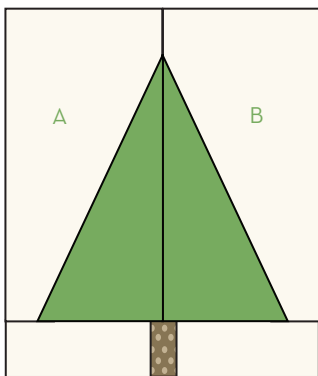
4. stitch the two pieces together, 1/4" inch seam. Press the seams flat.



5. use a clear quilting ruler to trim off the two triangles from the bottom of the tree.



6. choose one of your stumps, and place it centered at the bottom of your tree, right sides together. Stitch the pieces together, again with 1/4" seam allowance.



7. Press the seam flat, sides up towards the green side.

When you have made many little trees and are ready to sew them together to form the quilt top, you will trim down the block to even it out and square it.