

mimi kirchner doll

purlsoho.com

a free pattern from the purl bee!

This pattern is copyright and the property of purl and purlsoho.com. This pattern and project are for home use only, not for resale.

Purlsoho would like to thank Mimi Kirchner for sharing her beautiful doll designs with us. To see more of Mimi's work, visit: www.mimikirchner.com

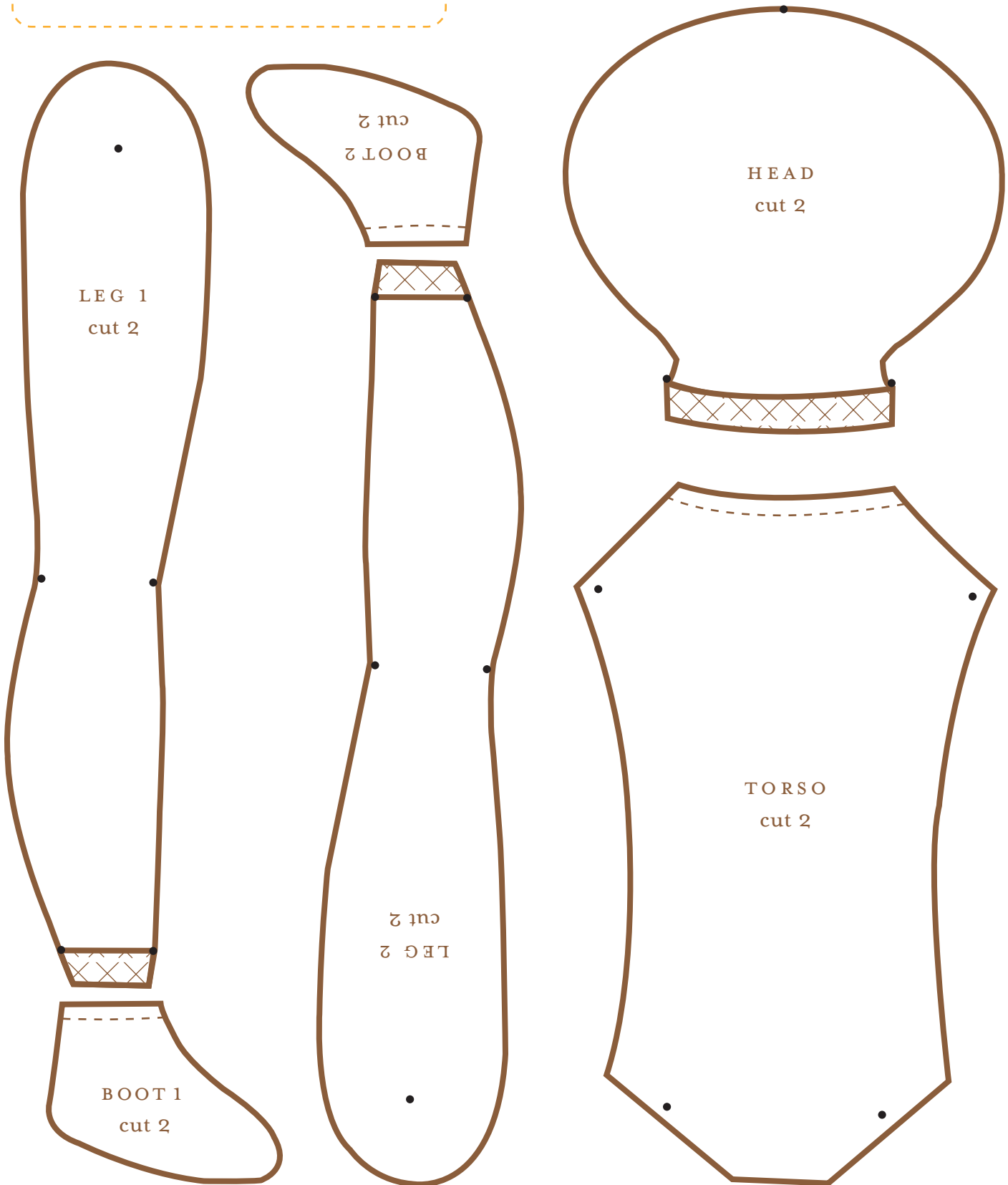
KEY

- - - stitch line



overlap

• mark these dots



mimi kirchner doll

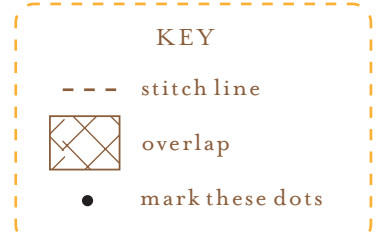
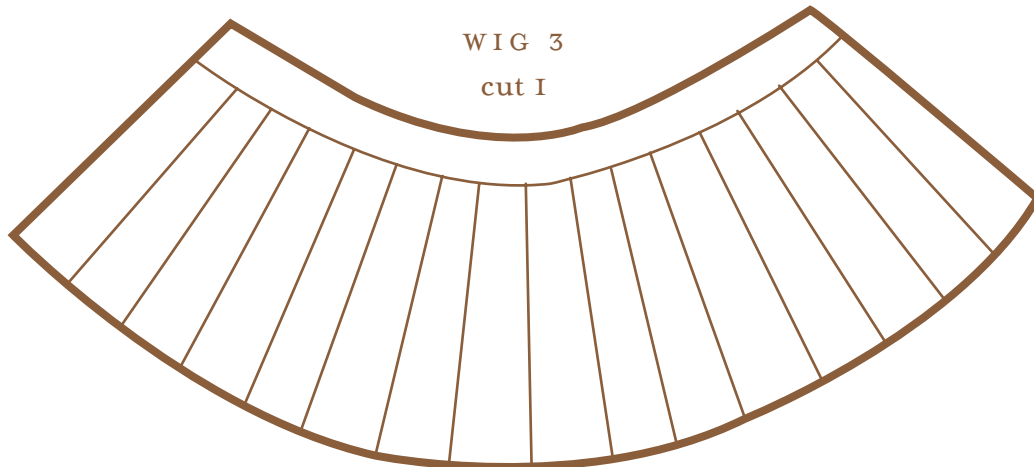
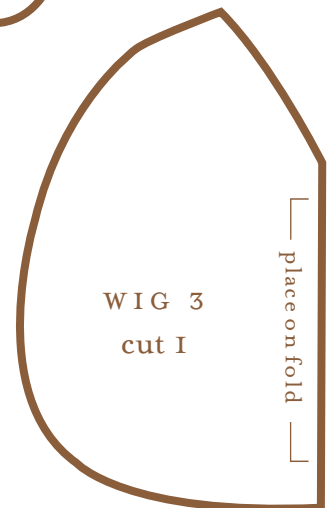
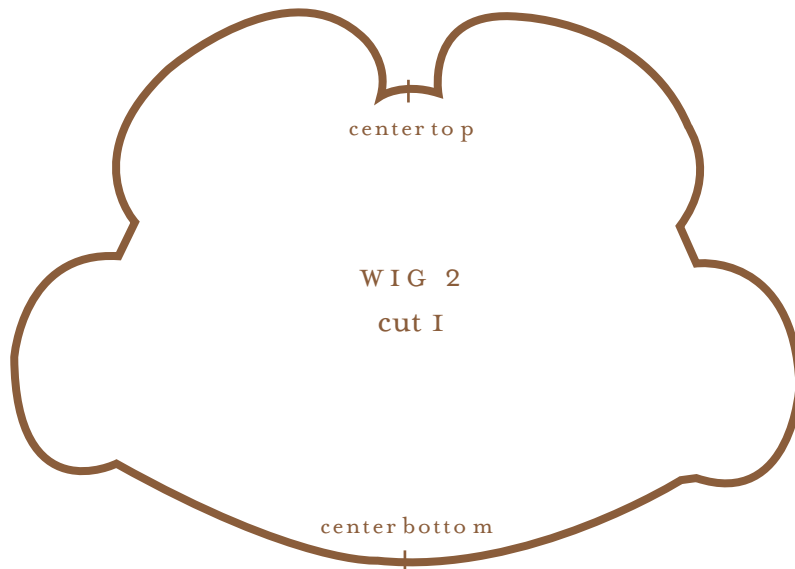
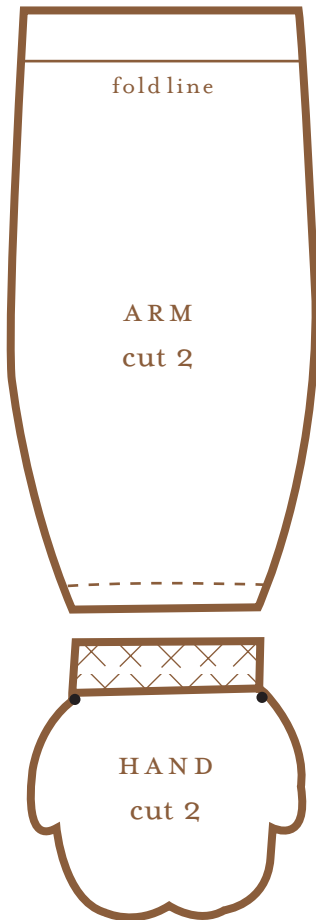
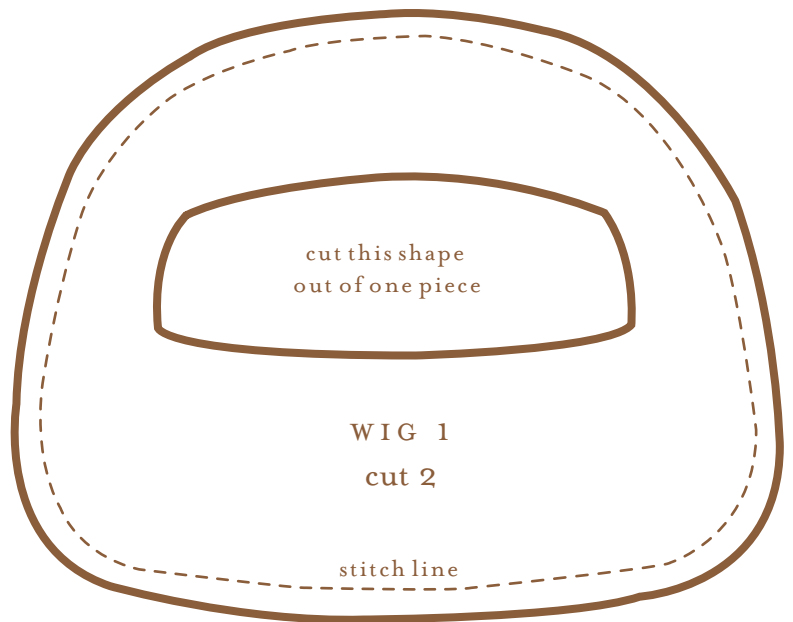
purlsoho.com

a free pattern from the purl bee!

This pattern is copyright and the property of purl and purlsoho.com. This pattern and project are for home use only, not for resale.

Purlsoho would like to thank Mimi Kirchner for sharing her beautiful doll designs with us.

To see more of Mimi's work, visit:
www.mimikirchner.com



mimi kirchner doll

purlsoho.com

a free pattern from the purl bee!

This pattern is copyright and the property of purl and purlsoho.com. This pattern and project are for home use only, not for resale.

Purlsoho would like to thank Mimi Kirchner for sharing her beautiful doll designs with us. To see more of Mimi's work, visit: www.mimikirchner.com

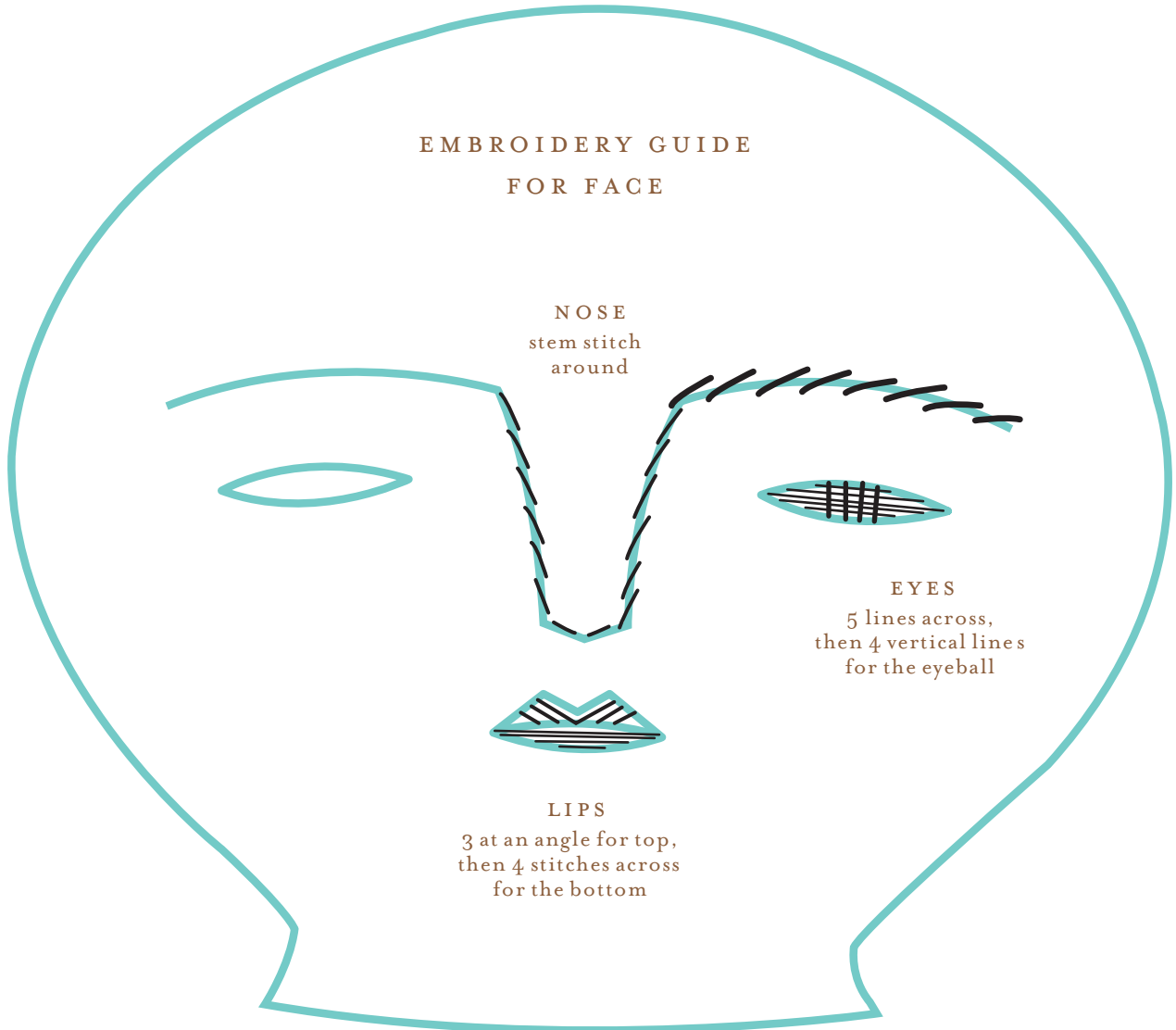


EMBROIDERY GUIDE FOR FACE

NOSE
stem stitch
around

EYES
5 lines across,
then 4 vertical lines
for the eyeball

LIPS
3 at an angle for top,
then 4 stitches across
for the bottom



mimi kirchner doll

purlsoho.com

a free pattern from the purl bee!

This pattern is copyright and the property of purl and purlsoho.com. This pattern and project are for home use only, not for resale .

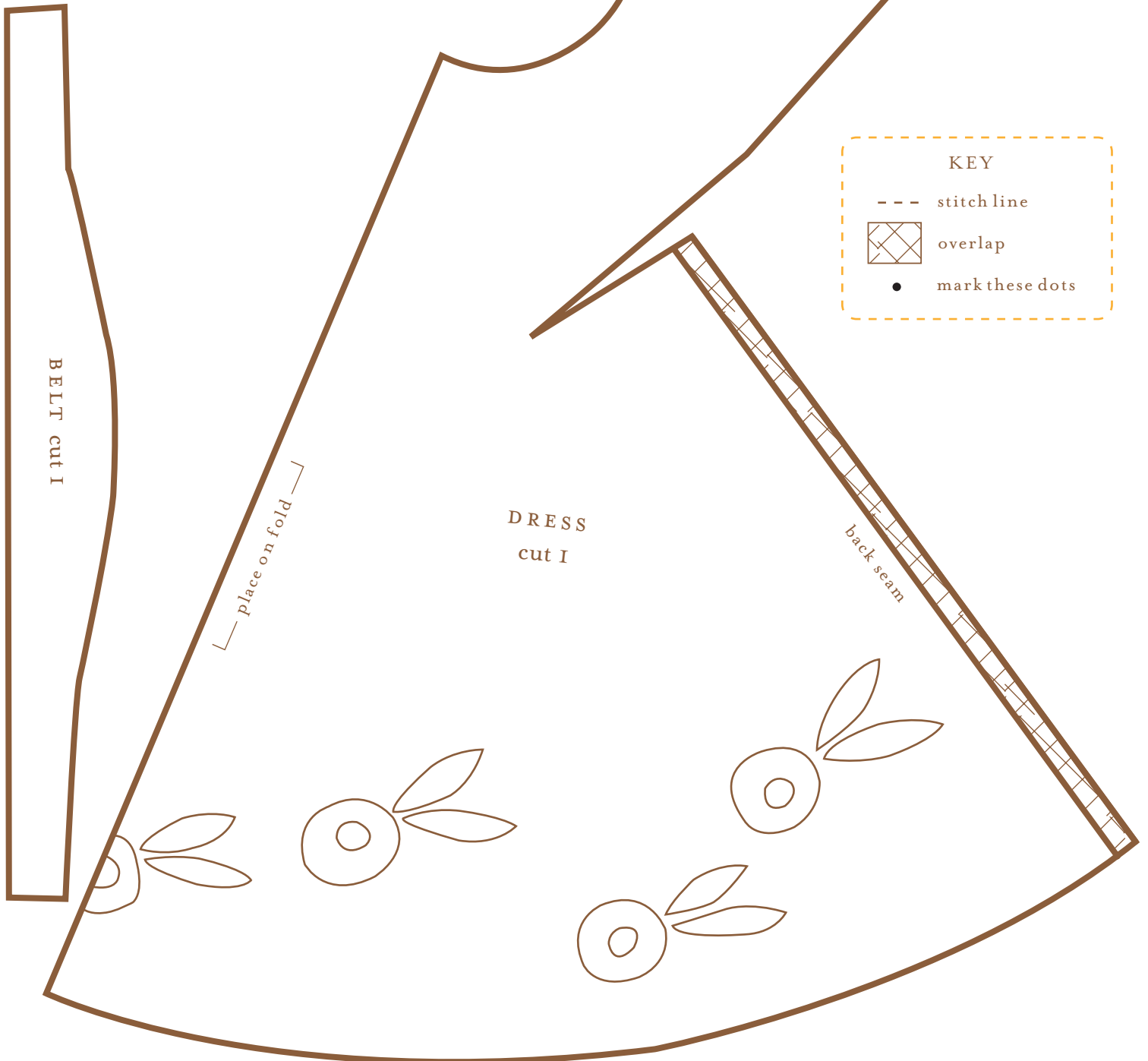
Purlsoho would like to thank Mimi Kirchner for sharing her beautiful doll designs with us .
To see more of Mimi's work, visit:
www.mimikirchner.com




HAIR
FLOWER



SASH
FLOWER



KEY

- stitch line
-  overlap
- mark these dots

BELT cut I

place on fold

DRESS
cut I

back seam